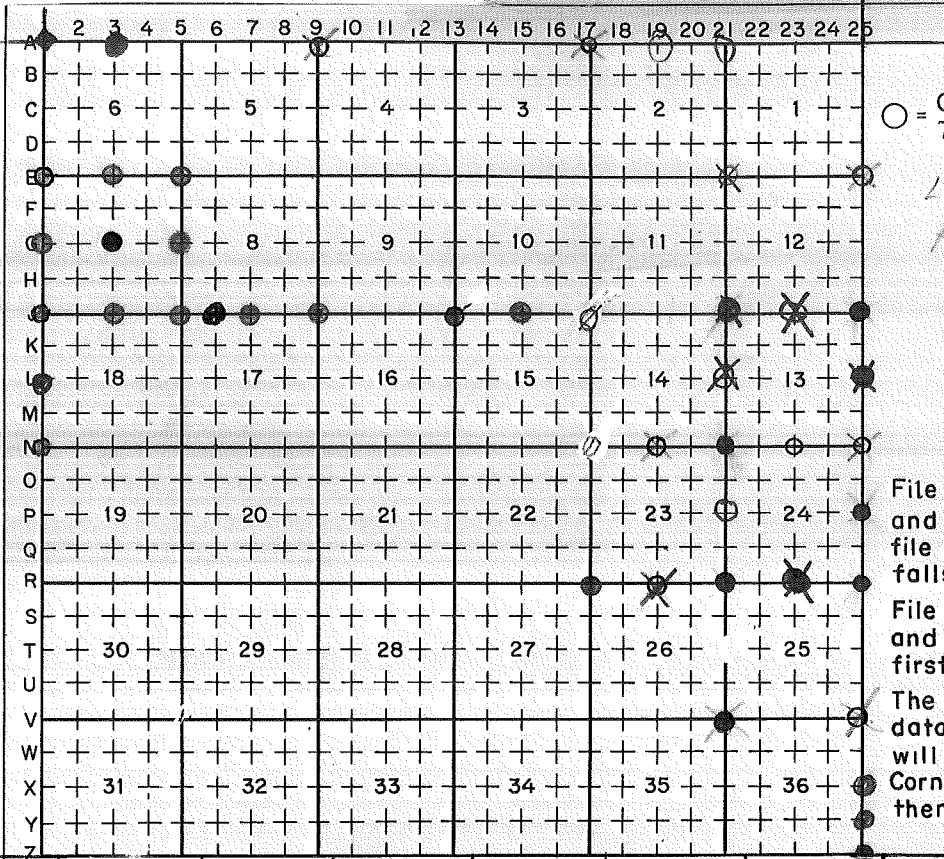


T 25S, R 12E, M W



**LEGEND**

○ = Corner having information on form 7100-52 in this file.

*Legend Confirms to Reporting Form MPB 2/80*

**FILING INSTRUCTION**

File 7100-52 card record by letter and number coordinates behind the file guide for the township in which it falls.

File the 7100-52 card record by letter and then by number i.e., all A cards first, then B cards etc.

The first card behind the file guide (if data have been obtained and recorded) will be card A-1 for N.W. Township Corner, then card A-2 for 1/16 corner then card A-3 for 1/4 corner etc.

D-7100-52d (10/78)  
USDA-FOREST SERVICE

Index \_\_\_\_\_  
File No. 0151  
T 25 S. R. 12 E. R.D. FT. ROCK County KLAMATH Survey No. \_\_\_\_\_  
Merid. WILLAMETTE N.F. DESCHUTES State OREGON Section 36 of 31 Cor. No. A-01

SEE: Z-25 T. 24 S., R. 11 E. W.M.

BC by BLM, 1972

0151

A-01

USDA-FOREST SERVICE

Index

File No. 0351

CORNER RECORD (SEARCH)

(Ref. FSM 7151.4)

Tract or Survey No. \_\_\_\_\_

Cor. No. A-03

T 25 S R. 12 E

R.D. Crescent

County Lake

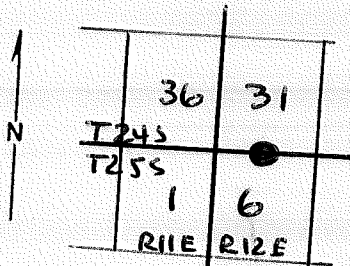
N.F. Deschutes

State Ore

N/4 S. 6

Merid. WME

CORNER DIAGRAM



DESCRIBE CORNER MONUMENT FOUND

1  
Fd. Alum. Cap - flush w/ground in good condition.

DESCRIBE BEARING TREES OR OTHER OFFICIAL ACCESSORIES FOUND

2  
2 Bearing Trees, LP Dead-Down. Old Blaze on one tree, other tree buried, BT Tags on down tree on ground beside tree, Pink flagging.

DESCRIBE CORNER LOCATION RELATIVE TO NEAR-BY FEATURES, ALSO HOW TO REACH CORNER

PHOTO IDENTIFICATION DATA

Photo No. \_\_\_\_\_

Filed At. \_\_\_\_\_

Object Ident. \_\_\_\_\_

Ident. By \_\_\_\_\_

Signature

PLANE COORDINATE POSITION DATA

State \_\_\_\_\_ Zone \_\_\_\_\_

X \_\_\_\_\_

Y \_\_\_\_\_

Estob. By \_\_\_\_\_

Agency

Signature

Brian O'Reilly

Title

Division

BFR

Headquarters

BFR

Date 12/22/00 FS-7100-52 (3/68)



# CORNER RECORD (PERPETUATION)

MONUMENT : DESCRIBE NEW MONUMENT SET, OR WORK DONE TO PRESERVE EXISTING MONUMENT

ACCESSORIES : DESCRIBE NEW BT's WITNESS OBJECTS ETC. ESTABLISHED, OR WORK DONE TO PRESERVE EXISTING EVIDENCE

Work Done By \_\_\_\_\_ Title \_\_\_\_\_ Date \_\_\_\_\_ State Registration No. or Agency \_\_\_\_\_  
Certified Cor. Record Prepared ? Yes No Filed At: \_\_\_\_\_ Date \_\_\_\_\_

REMARKS

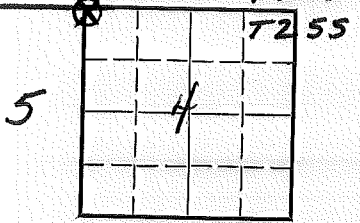
Index File No. T. R. M. Tract or Surv. No. Cer. 13

LAND CORNER RECORD  
(Rectangular)

A-09 5680-2

1. T25S R 12E No. A-9 Cor Sec. Mer Will State Oregon N. F. Deschutes Dist. Port Rock

2. Corner Status  
32 33 T24S  
T25S



3. Original Description \_\_\_\_\_ Vol. \_\_\_\_\_ Page \_\_\_\_\_ Where Recorded \_\_\_\_\_

4. Description of Corners: \_\_\_\_\_

5. Investigation Notes:

See T24S R12E Sec. 32 No. Z-9

EV. FD.  
3/18/79

7. Photo Identification

Photo No. \_\_\_\_\_

Ident. By: \_\_\_\_\_

8. Plane Coordinate Position Data

State \_\_\_\_\_ Zone \_\_\_\_\_

X \_\_\_\_\_

Y \_\_\_\_\_

Estab. By \_\_\_\_\_

Field Book No. \_\_\_\_\_

Where Filed \_\_\_\_\_

9. Evaluation

Authentic.

Needs Verif. \_\_\_\_\_ Monument No

Re-estab. \_\_\_\_\_ Survey

Land Status Private

6. Signed D. M. Miller Title \_\_\_\_\_ Date \_\_\_\_\_

# PERPETUATION RECORD

10. Monument:

11. Accessories

		Field Book _____	Page _____
12. Set By _____	Title _____	13. Recorded By _____	Volume _____
License _____	Agency _____	(Agency)	Page _____
Date _____		(Date) _____	(City) _____
		(County) _____	(State) _____

14. Remarks:

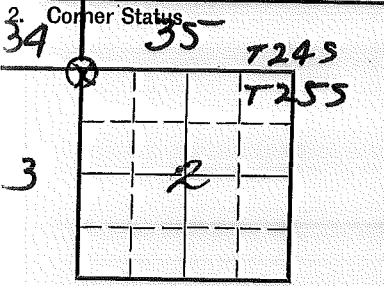
A-09

# LAND CORNER RECORD

(Rectangular)

A-17 5680-2

1. T 255 R 12E No A-17 Cor. Sec Mer. Wm State Ore. N. F. Deschutes Dist Fort Rock



3. Original Description \_\_\_\_\_ Vol. \_\_\_\_\_ Page \_\_\_\_\_ Where Recorded \_\_\_\_\_

4. Description of Corners: \_\_\_\_\_

5. Investigation Notes:  
  
*See E-17 T245 R12E*

*EV. 10. 3 B/S*

7. Photo Identification  
Photo No. \_\_\_\_\_  
Ident. By: \_\_\_\_\_

8. Plane Coordinate Position Data  
State \_\_\_\_\_ Zone \_\_\_\_\_  
X \_\_\_\_\_  
Y \_\_\_\_\_  
Estab. By \_\_\_\_\_  
Field Book No. \_\_\_\_\_  
Where Filed \_\_\_\_\_

9. Evaluation  
Authentic \_\_\_\_\_  
Needs Verif. \_\_\_\_\_ Monument \_\_\_\_\_  
Re-estab. \_\_\_\_\_ Survey \_\_\_\_\_  
and Status \_\_\_\_\_

6. Signed \_\_\_\_\_ Title \_\_\_\_\_ Date \_\_\_\_\_

PERPETUATION RECORD

10. Monument:

11. Accessories

Field Book \_\_\_\_\_ Page \_\_\_\_\_

12. Set By \_\_\_\_\_ Title \_\_\_\_\_

License \_\_\_\_\_ Agency \_\_\_\_\_ Date \_\_\_\_\_

13. Recorded By \_\_\_\_\_ Volume \_\_\_\_\_ Page \_\_\_\_\_  
(Agency)

(Date) (City) (County) (State)

14. Remarks:

D-7100-52 d (10/78)  
USDA-FOREST SERVICE

Index  
File No. 1951

CORNER RECORD (SEARCH)

Ref. FSM 7151.4

Contract or  
Survey No. \_\_\_\_\_

Cor.  
No. A-19

T 25 S. R. 13 E. R.D. FORT ROCK

County LAKE

Cor. of  
N/4

Merid. WILLAMETTE

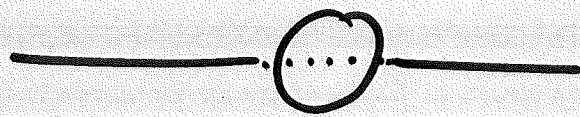
N.F. DESCHUTES

State OREGON

Section 2

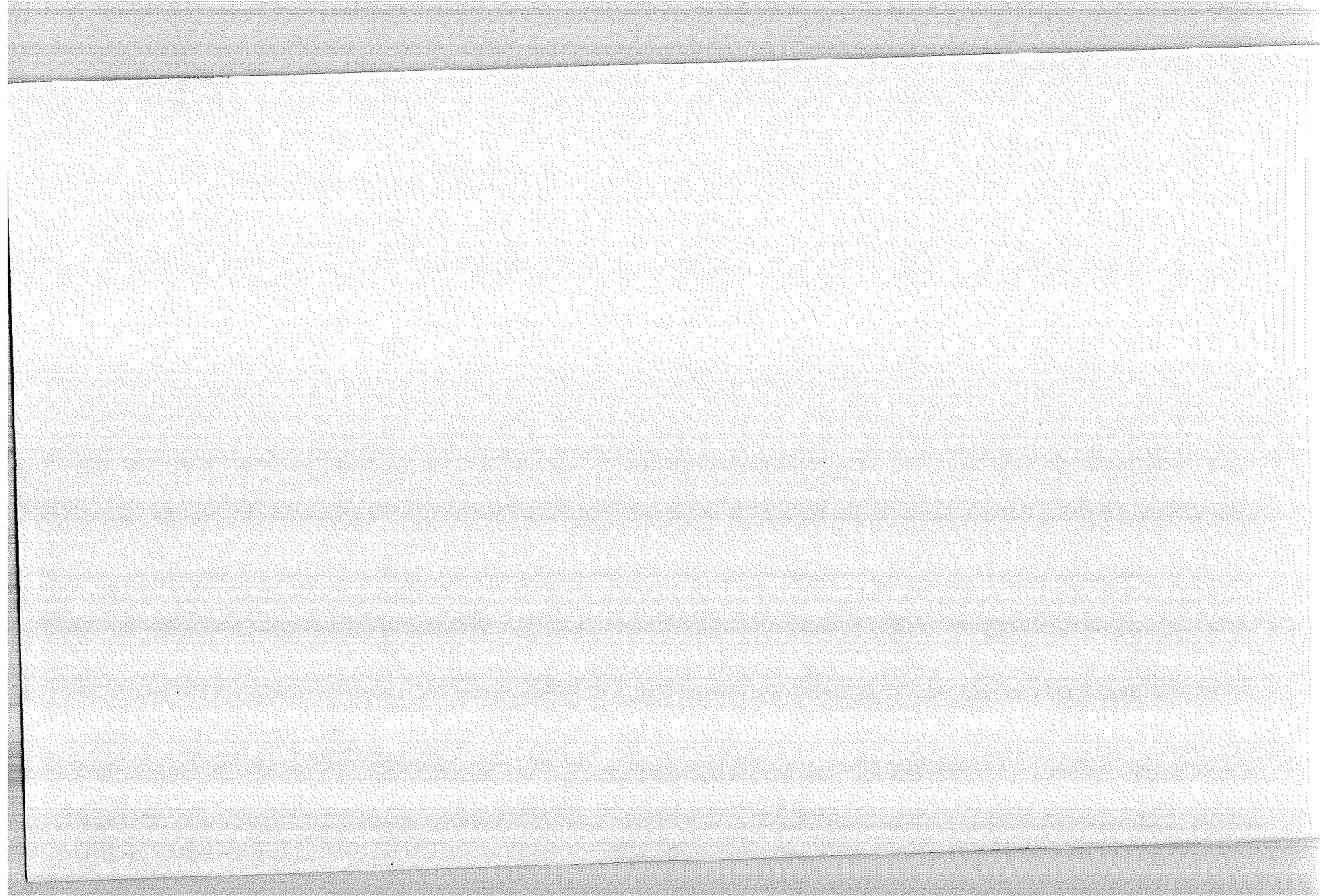
SEE: 2-19

T. 24 S., R. 13 E. W.H.



SF/NF





D-7100-52d (10/78)  
USDA-FOREST SERVICE

Index  
File No. 2151

CORNER RECORD (SEARCH)

(Ref. FSM 7151.4)

Contract or  
Survey No. \_\_\_\_\_

Cor.  
No. A-21

T 25 S. R. 13 E. R.D. Fort Rock

County LAKE

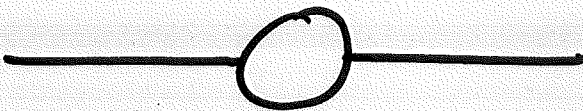
NW Cor. of

Merid. WILLAMETTE N.F. DESCHUTES

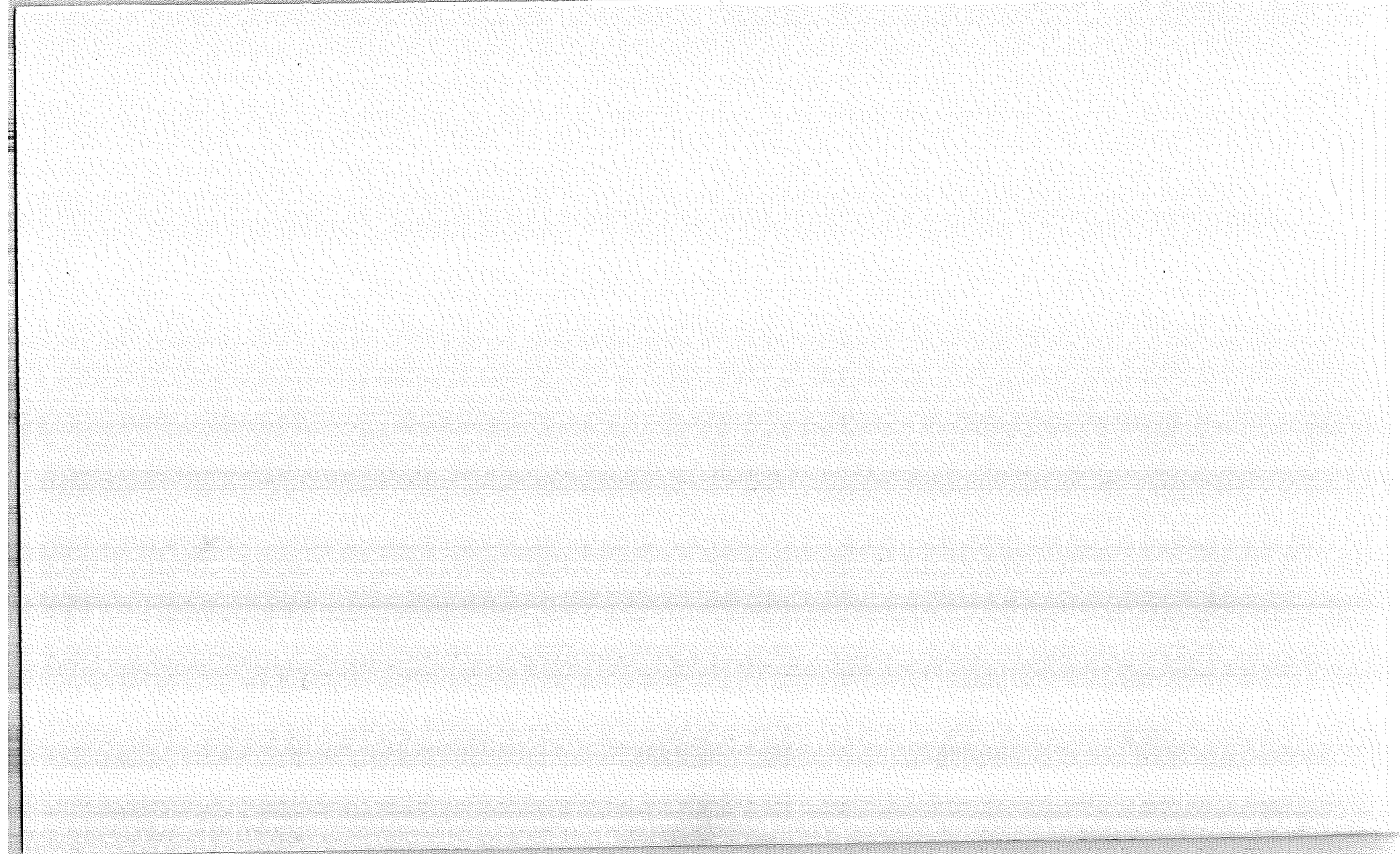
State OREGON

Section 1

SEE: 2-21 T. 24 S., R. 13 E., W.M.



SF/NF



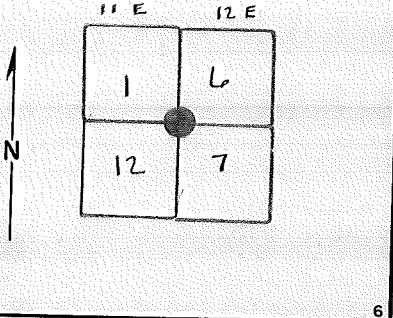
Index File No. 0155

**CORNER RECORD (SEARCH)**  
(Ref. FSM 7151.4)

Tract or Survey No. \_\_\_\_\_  
Cor. No. E-01  
NW Cor Sec 7

T 25 S, T25S R. R12E R.D. Fort Rock County Lake  
Merid. Willamette N.F. Deschutes State Oregon

**CORNER DIAGRAM**



**DESCRIBE CORNER MONUMENT FOUND**

**DESCRIBE BEARING TREES OR OTHER OFFICIAL ACCESSORIES FOUND**

At the corner I found Bearing Trees number 2 and 3 to be in good condition. Bearing Tree number 1 is a down, burned snag and number 4 is a standing snag.

**PHOTO IDENTIFICATION DATA**

Photo No. \_\_\_\_\_  
Filed At. \_\_\_\_\_  
Object Ident. \_\_\_\_\_  
Ident. By \_\_\_\_\_  
*Signature*

**DESCRIBE CORNER LOCATION RELATIVE TO NEAR-BY FEATURES, ALSO HOW TO REACH CORNER**

**PLANE COORDINATE POSITION DATA**

State \_\_\_\_\_ Zone \_\_\_\_\_  
X \_\_\_\_\_  
Y \_\_\_\_\_  
Estab. By \_\_\_\_\_  
*Agency*

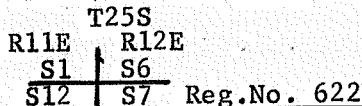
VISITED BY FREMONT FOREST 1981 - OK

Signature H. M. Van Horn Title Eng. Tech. Division SO Headquarters \_\_\_\_\_ Date 2-6-73  
7100-52 (3/68)

**CORNER RECORD (PERPETUATION)**

**MONUMENT: DESCRIBE NEW MONUMENT SET, OR WORK DONE TO PRESERVE EXISTING MONUMENT**

I set the corner and blazed and scribed two new Bearing Trees. I monumented the corner with a 2-inch galvanized iron pipe, w/brass cap, 30 inches long, set 24 inches into the ground and marked it:



**ACCESSORIES : DESCRIBE NEW BT'S WITNESS OBJECTS ETC. ESTABLISHED, OR WORK DONE TO PRESERVE EXISTING EVIDENCE from which:**

(2) A ponderosa pine 15 inches in diameter bears N37°E a distance of 63.1 feet to a 60d nail in the base of the tree.

A ponderosa pine 15 inches in diameter scribed T25S, R11E, S1, BT bears N35°W a distance of 18.0 feet to a 60d nail in the base of the tree.

A ponderosa pine 8 inches in diameter scribed T25S, R12E, S12, BT bears S46°W a distance of 9.3 feet to a 60d nail in the base of the tree.

(3) A ponderosa pine 23 inches in diameter bears S32°E a distance of 87.2 feet to a 60d nail in the base of the tree.

Work Done By Wm. F. Steers, Jr Title R.L.S. Date 1-25-6 State Registration No. 622  
or Agency

Certified Cor. Record Prepared ? Yes  No  Filed At: Lake County Courthouse Date \_\_\_\_\_

**REMARKS**

See file: T25S, R11E  
 T25S, R12E

REVISITED BY FREMONT (1981)

WALT MILLER (PLS 2111) Replaced SE bearing tree: (12/86)

AN 11" P. pine brs S06°E @ 68.8' ft to a 60-d nail ESE base MKD T25SR12ES7B1

Index File No. 0155 T. 25 S. R. 12 E. M.

Tract or Surv. No. \_\_\_\_\_

Cor. E-01 13

Index File No. ~~12~~ 0355

**CORNER RECORD (SEARCH)**  
(Ref. FSM 7151.4)

Tract or Survey No. \_\_\_\_\_  
Cor. No. E-03

T 25 S R. 12 E

R.D. Fort Rock County ~~Deschutes~~ LAKE

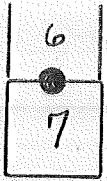
S/4 Coy. SEC. 6

Merid. Willamette

N.F. Deschutes State Oregon

N/A Coy. SEC. 7

**CORNER DIAGRAM**



**DESCRIBE CORNER MONUMENT FOUND**

**DESCRIBE BEARING TREES OR OTHER OFFICIAL ACCESSORIES FOUND**

At the corner I found BT 1 to be a blowdown stump. BT 2 was missing.

**PHOTO IDENTIFICATION DATA**

Photo No. \_\_\_\_\_  
Filed At. \_\_\_\_\_  
Object Ident. \_\_\_\_\_  
Ident. By \_\_\_\_\_  
*Signature*

**DESCRIBE CORNER LOCATION RELATIVE TO NEAR-BY FEATURES, ALSO HOW TO REACH CORNER**

**PLANE COORDINATE POSITION DATA**

State \_\_\_\_\_ Zone \_\_\_\_\_  
X \_\_\_\_\_  
Y \_\_\_\_\_  
Estab. By \_\_\_\_\_  
*Agency*

Signature  
**H. M. Van Horn**

Title  
**Eng. Tech.**

Division  
**SO**

Headquarters

Date  
**2-6-73**

7100-52 (3/68)





Index  
File No. ~~055~~ 0555

**CORNER RECORD (SEARCH)**

(Ref. FSM 7151.4)

Tract or  
Survey No. \_\_\_\_\_

Cor.  
No. E-05

T 25 S R. 12 E

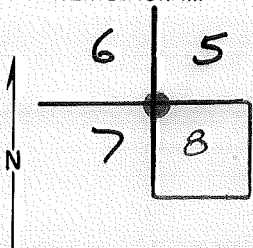
R.D. Fort Rock County Lake

NE Cor Sec 7

Merid. Willamette

N.F. Deschutes State Oregon

CORNER DIAGRAM



DESCRIBE CORNER MONUMENT FOUND

DESCRIBE BEARING TREES OR OTHER OFFICIAL ACCESSORIES FOUND

At the corner I found no sign of BTs 1 and 2. BTs 3 and 4 were down and rotten. I located the corner from these and blazed and scribed four new bearing trees.

PHOTO IDENTIFICATION DATA

Photo No. \_\_\_\_\_

Filed At. \_\_\_\_\_

Object Ident. \_\_\_\_\_

Ident. By \_\_\_\_\_

*Signature*

PLANE COORDINATE POSITION DATA

State \_\_\_\_\_ Zone \_\_\_\_\_

X \_\_\_\_\_

Y \_\_\_\_\_

Estab. By \_\_\_\_\_

*Agency*

Signature

**H. M. Van Horn**

Title

**Eng. Tech.**

Division

**SO**

Headquarters

Date

**2-6-73**

7100-52 (3/68)

CORNER RECORD (PERPETUATION)

MONUMENT: DESCRIBE NEW MONUMENT SET, OR WORK DONE TO PRESERVE EXISTING MONUMENT

I monumented the corner with a 2-inch galvanized iron pipe, w/brass cap, 30 inches long, set 24 inches into the ground and marked it:

T25S R12E

$$\begin{array}{r} S6/S5 \\ \hline S7/S8 \end{array}$$

Reg.No. 622

9

ACCESSORIES : DESCRIBE NEW BT's WITNESS OBJECTS ETC. ESTABLISHED, OR WORK DONE TO PRESERVE EXISTING EVIDENCE from which:

- A lodgepole pine 9 inches in diameter, scribed T25S, R12E, S5, BT, bears N76°E, a distance of 19.2 feet to a 60d nail in the base of the tree.
- A lodgepole pine 9 inches in diameter, scribed T25S, R12E, S6, BT, bears N24°W, a distance of 6.9 feet to a 60d nail in the base of the tree.
- A lodgepole pine 9 inches in diameter, scribed T25S, R12E, S7, BT, bears S14°W, a distance of 6.5 feet to a 60d nail in the base of the tree.
- A lodgepole pine 7 inches in diameter, scribed T25S, R12E, S8, BT, bears S59°E, a distance of 14.3 feet to a 60d nail in the base of the tree.

10

Work Done By. Wm. F. Steers, Jr. Title R.L.S. Date 1-25-65 State Registration No. 622  
or Agency

Certified Cor. Record Prepared ? Yes  No  Filed At: Lake County Courthouse Date

11

REMARKS

See file: T25S R12E

12

USDA-FOREST SERVICE

Index

File No. \_\_\_\_\_

CORNER RECORD (SEARCH)

(Ref. FSM 7151.4)

Tract or

Survey No. \_\_\_\_\_

Cor.

No. E-17

T 255 R. 12E

R.D. FT. ROCK

County

LAKE

N.W. COR. OF

Merid. Will.

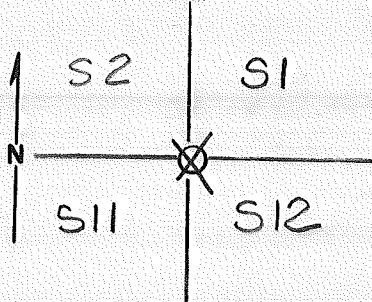
N.F. DESC.

State

OR

SEC 12

CORNER DIAGRAM



DESCRIBE CORNER MONUMENT FOUND

FOUND CRUISER POST IN RING OF STONE (3) WITH ONE STONE FIRMLY BEDDED IN MIDDLE. NO VISIBLE NOTCHES

DESCRIBE BEARING TREES OR OTHER OFFICIAL ACCESSORIES FOUND

36+ " STUMP W/ DECAYED PIECE OF BOTTOM BLAZE B"

PHOTO IDENTIFICATION DATA

Photo No. \_\_\_\_\_

Filed At. \_\_\_\_\_

Object Ident. \_\_\_\_\_

Ident. By \_\_\_\_\_

Signature

6

DESCRIBE CORNER LOCATION RELATIVE TO NEAR-BY FEATURES, ALSO HOW TO REACH CORNER

SIGN BOARD ON ROAD #3125 STATING "HERE" COR. LOCATED 130' S. OF BOARD

PLANE COORDINATE POSITION DATA

State \_\_\_\_\_ Zone \_\_\_\_\_

X \_\_\_\_\_

Y \_\_\_\_\_

Estab. By \_\_\_\_\_

Agency

8

Signature R. TAYLOR

ST

Division

CS

Headquarters

SO

Date

7/1/87

7100-52-(3/68)

4

5

CORNER RECORD (PERPETUATION)

MONUMENT: DESCRIBE NEW MONUMENT SET, OR WORK DONE TO PRESERVE EXISTING MONUMENT

ACCESSORIES: DESCRIBE NEW BT'S WITNESS OBJECTS ETC. ESTABLISHED, OR WORK DONE TO PRESERVE EXISTING EVIDENCE

Work Done By \_\_\_\_\_ Title \_\_\_\_\_ Date \_\_\_\_\_ State Registration No. or Agency \_\_\_\_\_

Certified Cor. Record Prepared? Yes  No  Filed At: \_\_\_\_\_ Date \_\_\_\_\_

HISTORY: STONE 16" X 9" X 7" W/PITS  
36" PINE, S 38° E, 23 LKS

REMARKS

Index File No.

T. 255 R. 12E M.

Tract or Surv. No.

U.S. G.P.O. 1977-725-576/586

Cor. 5-1-13

USDA-FOREST SERVICE

Index

File No. \_\_\_\_\_

T 25 S. R. 12E E.

Merid. WILLAMETTE

CORNER RECORD (SEARCH)

(Ref. FSM 7151.4)

R.D. Ft. Rock

County Lake

N.F. DESCHUTES

State OREGON

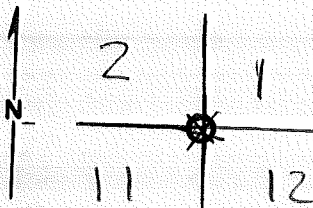
Tract or

Survey No. \_\_\_\_\_

Cor.

No. E-21

CORNER DIAGRAM



DESCRIBE CORNER MONUMENT FOUND

Set Stone + scribed post

DESCRIBE BEARING TREES OR OTHER OFFICIAL ACCESSORIES FOUND

PHOTO IDENTIFICATION DATA

Photo No. 65-V DOH

Filed At. Mendo Park, CA.

Object Ident. \_\_\_\_\_

Ident. By J.N. Tennant

USGS 11/77 Signature

Line 2 Exposure 259

DESCRIBE CORNER LOCATION RELATIVE TO NEAR-BY FEATURES, ALSO HOW TO REACH CORNER

PLANE COORDINATE POSITION DATA

State \_\_\_\_\_ Zone \_\_\_\_\_

X \_\_\_\_\_

Y \_\_\_\_\_

Estab. By \_\_\_\_\_

Agency

Signature

Title

Division

Headquarters

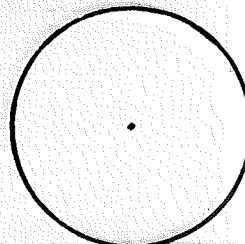
Date

D-7100-52 (10/78)



CORNER RECORD (PERPETUATION)

MONUMENT: DESCRIBE NEW MONUMENT SET, OR WORK DONE TO PRESERVE EXISTING MONUMENT



ACCESSORIES DESCRIBE NEW BT'S WITNESS OBJECTS ETC. ESTABLISHED, OR WORK DONE TO PRESERVE EXISTING EVIDENCE

Work Done By \_\_\_\_\_ Title \_\_\_\_\_ Date \_\_\_\_\_ State Registration No. or Agency \_\_\_\_\_

Certified Cor. Record Prepared? Yes No Filed At: \_\_\_\_\_ Date \_\_\_\_\_

REMARKS

Index File No. T. S., R. E., W.M. Tract or Surv. No. Cor. *E-21*

Index  
File No. E-25

CORNER RECORD (SEARCH)

(Ref. FSM 7151.4)

Tract or Survey No. \_\_\_\_\_  
Cor. No. E-25

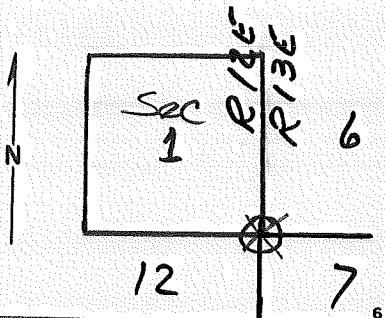
T 25S R. 12E

R.D. Fort Rock County Lake

Merid. Will

N.F. Deschutes State Ore.

CORNER DIAGRAM



DESCRIBE CORNER MONUMENT FOUND

DESCRIBE BEARING TREES OR OTHER OFFICIAL ACCESSORIES FOUND

4 BT'S found.  
South bearing Trees both good  
N.W. BT. is a stump  
N.E. BT. is a stump & out of the ground,  
(Line 2 - exposure 2-259)

PHOTO IDENTIFICATION DATA

Photo No. GS-VDOH  
Filed At. Menlo Park, Ca.  
Object Ident. SW BT. Ident.  
Ident. By J.N. Tennant USGS  
11/77 Signature

DESCRIBE CORNER LOCATION RELATIVE TO NEAR-BY FEATURES, ALSO HOW TO REACH CORNER

PLANE COORDINATE POSITION DATA

State \_\_\_\_\_ Zone \_\_\_\_\_  
X \_\_\_\_\_  
Y \_\_\_\_\_  
Estab. By \_\_\_\_\_  
Agency

Signature

Title

Division

Headquarters

Date

7100-52-(3/68)

CORNER RECORD (PERPETUATION)

MONUMENT : DESCRIBE NEW MONUMENT SET, OR WORK DONE TO PRESERVE EXISTING MONUMENT

9

ACCESSORIES : DESCRIBE NEW BT'S WITNESS OBJECTS ETC. ESTABLISHED, OR WORK DONE TO PRESERVE EXISTING EVIDENCE

10

Work Done By \_\_\_\_\_ Title \_\_\_\_\_ Date \_\_\_\_\_ State Registration No. or Agency \_\_\_\_\_

Certified Cor. Record Prepared ? Yes No Filed At: \_\_\_\_\_ Date \_\_\_\_\_

11

REMARKS

Index File No.

T.

R.

M.

Tract or Surv. No.

Cor.

E-25

12

13

Index  
File No. 0157

CORNER RECORD (SEARCH)

(Ref. FSM 7151.4)

Tract or  
Survey No.

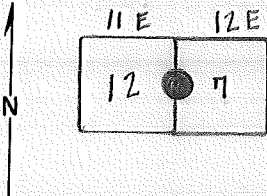
Cor.  
No. G-01

T 25 S R. 12E

R.D. Fort Rock County ~~Deschutes~~ LAKE E/4 Cor Sec. 11

Merid. Willamette N.F. Deschutes State Oregon W/4 Cor Sec. 7

CORNER DIAGRAM



DESCRIBE CORNER MONUMENT FOUND

At the corner I found both Bearing Trees to be in good condition.

DESCRIBE BEARING TREES OR OTHER OFFICIAL ACCESSORIES FOUND

PHOTO IDENTIFICATION DATA

Photo No. \_\_\_\_\_  
Filed At. \_\_\_\_\_  
Object Ident. \_\_\_\_\_  
Ident. By \_\_\_\_\_  
*Signature*

DESCRIBE CORNER LOCATION RELATIVE TO NEAR-BY FEATURES, ALSO HOW TO REACH CORNER

PLANE COORDINATE POSITION DATA

State \_\_\_\_\_ Zone \_\_\_\_\_  
X \_\_\_\_\_  
Y \_\_\_\_\_  
Estab. By \_\_\_\_\_  
*Agency*

Signature  
H. M. Van Horn

Title  
Eng. Tech.

Division  
SO

Headquarters

Date  
2-6-73

7100-52 (3/68)

4  
5

CORNER RECORD (PERPETUATION)

MONUMENT: DESCRIBE NEW MONUMENT SET, OR WORK DONE TO PRESERVE EXISTING MONUMENT

I set the corner and monumented it with a 2-inch galvanized iron pipe, w/brass cap, 30 inches long, set 24 inches into the ground and marked it:

1/4  
S12 | S7  
Reg.No. 622

9

ACCESSORIES : DESCRIBE NEW BT'S WITNESS OBJECTS ETC. ESTABLISHED, OR WORK DONE TO PRESERVE EXISTING EVIDENCE

from which:

(2) A ponderosa pine 22 inches in diameter bears S84°E a distance of 16.3 feet to a 60d nail in the base of the tree.

(1) A ponderosa pine 29 inches in diameter bears S20°W a distance of 13.4 feet to 60d nail in the base of the tree.

12/86 - A 9" p. pine brs S24 1/2° E @ 38.0' to 60-d spike NE base, MKD "1/4 S 7 BT"  
A 7' " " S41 3/4° W @ 27.6' " " " WNW base, MKD "1/4 S 12 BT"

10

Work Done By Wm. F. Steers, Jr Title R.L.S. Date 1/25/65 State Registration No. \_\_\_\_\_  
or Agency \_\_\_\_\_

Certified Cor. Record Prepared ? Yes  No \_\_\_\_\_ Filed At: Lake County Courthouse Date \_\_\_\_\_

11

REMARKS

See file: T25S R11E, R12E

REVISITED 11/9/82 BY STEVE CHAMBERLAIN - BTs FOUND AS STATED ABOVE WITH  
MINOR BEARING DIFFERENCES - DISTs, OKAY.

BCSP RISES 8", Walt Miller (Mtc - 12/86)

12

Index File No. 0157 T. 25 S. R. 12 E. M.

Tract or Surv. No.

Cor. G-01 13

Index

File No. 0357

CORNER RECORD (SEARCH) Contract or

(Ref. FSM 7151.4)

Survey No. 2853

Cor.

No. G-3

T 25 S. R. 12 E.

R.D. Ft. Rock

County Lake

G 1/4

Cor. of

Merid. Willamette

N.F. Deschutes

State Oregon

Section 7

CORNER DIAGRAM, per legend

DESCRIBE CORNER MONUMENT FOUND

None

DESCRIBE BEARING TREES OR OTHER OFFICIAL ACCESSORIES FOUND

None

PHOTO IDENTIFICATION DATA

Photo No. \_\_\_\_\_

Filed At. \_\_\_\_\_

Object Ident. \_\_\_\_\_

Ident. By \_\_\_\_\_

*Signature*

CORNER LEGEND:

FS or Unverified

Contr. Other



Searched For/Not Found



Evidence Found/Accept.



Permanent Mon. Set/Fd.

DESCRIBE CORNER LOCATION RELATIVE TO NEAR-BY FEATURES, ALSO HOW TO REACH CORNER

Searched By:

Title

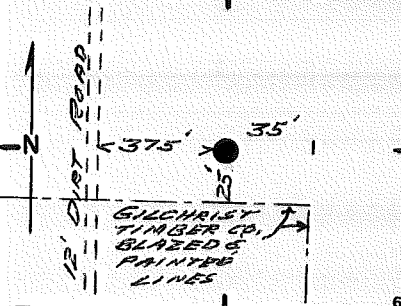
Division

Headquarters

Date

4

5



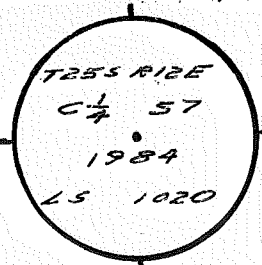


CORNER RECORD (PERPETUATION)

MONUMENT: DESCRIBE NEW MONUMENT SET, OR WORK DONE TO PRESERVE EXISTING MONUMENT

Set 2 1/2" x 2 3/4" Steel pipe w/ 3/4" Brass Cap 2 3/4" in ground in  
 a mound of stones. Face w/ BM-102; LSM-130. (R/L)  
 West 3°; South 3°.

MONUMENT STAMPED



ACCESSORIES: DESCRIBE NEW BT'S WITNESS OBJECTS ETC. ESTABLISHED, OR WORK DONE TO PRESERVE EXISTING EVIDENCE

10" P.P. Brs. N27°E 46°<sup>00'</sup> to 60-D in SE base, Scribed "C 1/4 57 BT"  
 6" P.P. Brs. N23°12'W 52°<sup>40'</sup> to 60-D in E base, Scribed "C 1/4 57 BT"  
 Signs 54-3, 54-9 placed on BTs & red band painted above 54-3.

Work Done By J. Collins Title L.S. Date 5/84 State Registration No. 01265  
 or Agency 1020  
 Plat. or Cor. Record Prepared? Yes  No  Filed At Lake Co. Surveyor's Office Date Nov. 1984

History  
 of  
 Surveys,  
 G.L.O.,  
 etc.

Index File No.  
 0357

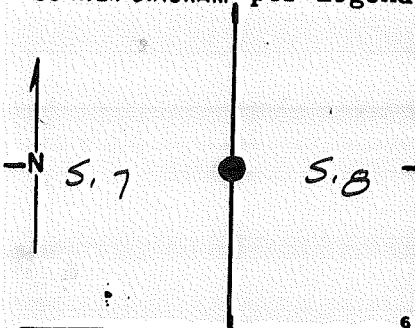
T.25 S., R.12 E., W.M.

Contract or Surv. No. 2853

Cor. G-3

Index File No. 0557 CORNER RECORD (SEARCH) Contract or Survey N<sup>o</sup>. \_\_\_\_\_ Cor. No. G-05  
 (Ref. FSM 7151.4) T 25 S. R. 12 E. R.D. FORT ROCK County LAKE W/4 Cor. of  
 Merid. Willamette N.F. Deschutes State Oregon Section 8

CORNER DIAGRAM per legend



DESCRIBE CORNER MONUMENT FOUND

2 1/2" BCSP RISING 1" ABOVE GROUND IN GOOD CONDITION.

DESCRIBE BEARING TREES OR OTHER OFFICIAL ACCESSORIES FOUND

10" L.P. PINE BRS N 55° W @ 65° FT MKD 1/4 SB BT NAIL IN FACE W/RING.

15" L.P. PINE BRS N 61° W @ 60° FT MKD 1/4 ST BT NAIL IN FACE WIRING.

DESCRIBE CORNER LOCATION RELATIVE TO NEAR-BY FEATURES, ALSO HOW TO REACH CORNER

PHOTO IDENTIFICATION DATA

Photo No. \_\_\_\_\_  
 Filed At. \_\_\_\_\_  
 Object Ident. \_\_\_\_\_  
 Ident. By \_\_\_\_\_  
 Signature \_\_\_\_\_

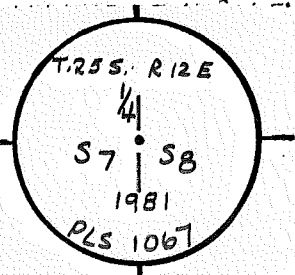
CORNER LEGEND:

- FS or Unverified
- Contr. Other
- Searched For/Not Found
- Evidence Found/Accept.
- Permanent Mon. Set/Fd.

Searched By: STEVE CHAMBERLAIN Title S.T. Division S.O. Headquarters BEND Date 11-9-82

CORNER RECORD (PERPETUATION)

MONUMENT STAMPED



MONUMENT : DESCRIBE NEW MONUMENT SET, OR WORK DONE TO PRESERVE EXISTING MONUMENT

---



---



---

ACCESSORIES : DESCRIBE NEW BT'S WITNESS OBJECTS ETC. ESTABLISHED, OR WORK DONE TO PRESERVE EXISTING EVIDENCE

---



---



---



---

Work Done By \_\_\_\_\_ Title \_\_\_\_\_ Date \_\_\_\_\_ State Registration No. or Agency \_\_\_\_\_

Plate or Cor. Record Prepared? Yes No Filed At: \_\_\_\_\_ Co. Surveyor's Office Date \_\_\_\_\_

History of Surveys, G.L.O., etc. \_\_\_\_\_  
\_\_\_\_\_  
\_\_\_\_\_

Index File No. \_\_\_\_\_ T. 25 S., R. 12 E., W.M. Contract or Surv. No. \_\_\_\_\_ Cor. \_\_\_\_\_

0557

G-05

Index  
File No. \_\_\_\_\_  
CORNER RECORD (SEARCH) (Ref. FSM 7151.4) Tract or Survey No. \_\_\_\_\_ Cor. No. J-01  
T 25 S. R. 12 E. R.D. CRESCENT County KLAMATH/LAKE  
Merid. WILLAMETTE N.F. DESCHUTES State OREGON

SEE : J-25  
T25S R11E

BC Set  
Steers 1966

J-01

USDA-FOREST SERVICE D-7100-52(2/82)

Index

File No. 0359

CORNER RECORD (SEARCH) Contract or

(Ref. FSM 7151.4)

Survey No. 2953

Cor.

No. J-3

T 25 S. R. 12 E.

R.D. Ft. Rock

County Lake

14

Cor. of

Merid. Willamette

N.F. Deschutes

State Oregon

Section 7-18

CORNER DIAGRAM per legend

DESCRIBE CORNER MONUMENT FOUND

2 1/2" Brass capped steel

Pipe, Rising 12".

T255 R12E

Cap marked!

1 57

4 518

RBS. No. 622

DESCRIBE BEARING TREES OR OTHER OFFICIAL ACCESSORIES FOUND

24" P. Pipe (ORIG. BT) BRS. S4 1/2° W 30' 15" to center of  
root crown; 29' 17" to head of 50-D SPK. placed

by Wm. Steere in North base. Scribing on BT  
beated over.

PHOTO IDENTIFICATION DATA

Photo No. \_\_\_\_\_

Filed At. \_\_\_\_\_

Object Ident. \_\_\_\_\_

Ident. By \_\_\_\_\_

*Signature*

CORNER LEGEND:

FS or Unverified

Contr. Other



Searched For/Not Found



Evidence Found/Accept.



Permanent Mon. Set/Fd.

DESCRIBE CORNER LOCATION RELATIVE TO NEAR-BY FEATURES, ALSO HOW TO REACH CORNER

Searched By:

Title

Division

Headquarters

Date

4

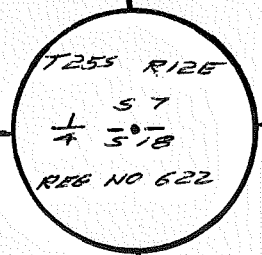
5

CORNER RECORD (PERPETUATION)

MONUMENT: DESCRIBE NEW MONUMENT SET, OR WORK DONE TO PRESERVE EXISTING MONUMENT

*No stones available for rock mound.*

MONUMENT STAMPED



ACCESSORIES DESCRIBE NEW BT'S WITNESS OBJECTS ETC. ESTABLISHED, OR WORK DONE TO PRESERVE EXISTING EVIDENCE

*6" P.P. Bts. N 31° E 5' 65" to 60-D in SW base, Scribed "1/4 57 13T"*

*Placed 60-D w/washer in West base of Orig. 13T @ center of root crown.*

*Placed signs 54-3, 54-4 on BTs & painted red band above 54-3.*

Work Done By J. Cochran Title LS Date 5/84 State Registration No. 9765 1020  
 or Agency NOV.  
 Plat. of Cor. Record Prepared?  Yes  No Filed At Lake Co. Surveyor's Office Date 1984

History of Surveys, G.L.O., etc. GLO - Henry Meldrum - 1880; Set pine post & 2 BTs.  
Re-manumented from 1 remaining BT in 1965 by  
Wm. Steers.

Index File No.  
0359

T.25S., R.12 E., W.M.

Contract or Surv. No.

Cor. J-3



Index  
File No. 0559

CORNER RECORD (SEARCH)  
(Ref. FSM 7151.4)

Tract or  
Survey No.

Cor.  
No. J-05  
SE Cor Sec 7

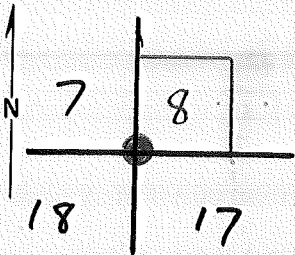
T 25 S R. 12 E

R.D. Fort Rock County ~~Deschutes~~ LAKE

Merid. Willamette

N.F. Deschutes State Oregon

CORNER DIAGRAM



6

DESCRIBE CORNER MONUMENT FOUND

DESCRIBE BEARING TREES OR OTHER OFFICIAL ACCESSORIES FOUND 2

At the corner I found BTs 1 and 2 to be in good condition.  
BTs 3 and 4 are down and rotted.

PHOTO IDENTIFICATION DATA

Photo No. \_\_\_\_\_  
Filed At. \_\_\_\_\_  
Object Ident. \_\_\_\_\_  
Ident. By \_\_\_\_\_  
*Signature*

PLANE COORDINATE POSITION DATA

State \_\_\_\_\_ Zone \_\_\_\_\_  
X \_\_\_\_\_  
Y \_\_\_\_\_  
Estab. By \_\_\_\_\_  
*Agency*

7

DESCRIBE CORNER LOCATION RELATIVE TO NEAR-BY FEATURES, ALSO HOW TO REACH CORNER 3

4

Signature  
H. M. Van Horn

Title  
Eng. Tech.

Division  
SO

Headquarters

Date  
2-6-73

7100-52 (3/68)

8

5

**CORNER RECORD (PERPETUATION)**

MONUMENT: DESCRIBE NEW MONUMENT SET, OR WORK DONE TO PRESERVE EXISTING MONUMENT

I set the corner from BTs 1 and 2 and blazed and scribed two new bearing trees. I monumented the corner by setting a 2-inch galvanized iron pipe, w/brass cap, 30 inches long, 24 inches into the ground and marked it: T25S R12E

S7	S8
S18	S17

Reg.No. 622

9

ACCESSORIES : DESCRIBE NEW BT'S WITNESS OBJECTS ETC. ESTABLISHED, OR WORK DONE TO PRESERVE EXISTING EVIDENCE from which:

(2) A ponderosa pine 20 inches in diameter, bears N66°E a distance of 31.7 feet to a 60d nail in the base of the tree.

(1) A ponderosa pine 27 inches in diameter bears N21°E, a distance of 29.7 feet to a 60d nail in the base of the tree.

A ponderosa pine 6 inches in diameter, scribed T25S, R12E, S18, BT, bears S86°W a distance of 27.5 feet to a 60d nail in the base of the tree.

A lodgepole pine 13 inches in diameter, scribed T25S, R12E, S17, BT, bears S5°E a distance of 15.4 feet to a 60d nail in the base of the tree.

10

Work Done By Wm. F. Steers, Jr. Title R.L.S. Date 1-25-65 State Registration No. 622  
or Agency

Certified Cor. Record Prepared ? Yes  No Filed At: Lake County Courthouse Date

11

REMARKS

See file T25S R12E

12/86 - Walt Miller (MTC)  
Replaced NE BT with a 5" pipe brng N 80°E @ 72.3' to a 60-d spike  
in S base, MKD " X BT "

12

Index File No. 0559 T. 25 S. R. 12 E. M.

Tract or Surv. No.

Cor. J-05 13

Index  
File No. \_\_\_\_\_

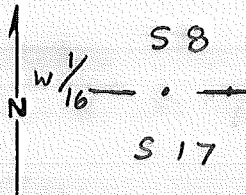
**CORNER RECORD (SEARCH)**

(Ref. FSM 7151.4)

Tract or Survey No. \_\_\_\_\_  
Cor. No. J-6

T 25S R. 12E R.D. Crescent County Lake  
Merid. Wil. N.F. Deschutes State OR

CORNER DIAGRAM



DESCRIBE CORNER MONUMENT FOUND

DESCRIBE BEARING TREES OR OTHER OFFICIAL ACCESSORIES FOUND

Both BTs are Dead & Down,  
most other trees in the area are dead  
dying or very sparse following a bug infestation,  
see back for New R.M.'s

PHOTO IDENTIFICATION DATA

Photo No. \_\_\_\_\_  
Filed At. \_\_\_\_\_  
Object Ident. \_\_\_\_\_  
Ident. By \_\_\_\_\_  
Signature \_\_\_\_\_

DESCRIBE CORNER LOCATION RELATIVE TO NEAR-BY FEATURES, ALSO HOW TO REACH CORNER

Approx 150' NE of end of spur Rd

PLANE COORDINATE POSITION DATA

State \_\_\_\_\_ Zone \_\_\_\_\_  
X \_\_\_\_\_  
Y \_\_\_\_\_  
Estab. By \_\_\_\_\_  
Agency \_\_\_\_\_

Signature Whom

Title \_\_\_\_\_

Division \_\_\_\_\_

Headquarters \_\_\_\_\_

Date 9/6/95

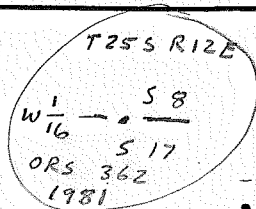
FS-7100-52 (3/68)

**CORNER RECORD (PERPETUATION)**

**MONUMENT: DESCRIBE NEW MONUMENT SET, OR WORK DONE TO PRESERVE EXISTING MONUMENT**

3" dia AC on 2 1/2" dia Alum. pipe  
 rising 1"

Steel Fence posts 3' Ft. S. & 3.5' west



**ACCESSORIES : DESCRIBE NEW BT'S WITNESS OBJECTS ETC. ESTABLISHED, OR WORK DONE TO PRESERVE EXISTING EVIDENCE**

5/8" dia x 30" long Rebar w/ 3" dia AC driven flush mkd RM1 PLS 2111 1995  
 N 45° E. 28' ft.

5/8" dia x 30" long Rebar w/ 1 1/2" dia AC driven flush mkd RM2 PLS 2111 1995  
 N 45° W 13' ft.

Line is posted West & South From Corner

Work Done By WH Title LS Date 7/6/95 State Registration No. or Agency \_\_\_\_\_

Certified Cor. Record Prepared? Yes  No  Filed At: \_\_\_\_\_ Date \_\_\_\_\_

REMARKS

Index File No. T. R. M. Tract or Surv. No. Cor.

Index

File No. J-7

**CORNER RECORD (SEARCH)**

(Ref. FSM 7151.4)

Tract or

Survey No. \_\_\_\_\_

Cor.

No. J-7

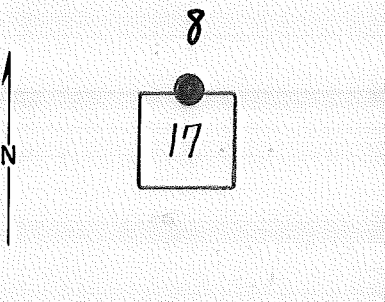
T 25 S R. 12 E

R.D. Fort Rock County Deschutes

N/A CON. SEC. 17  
3/4 CON. SEC. 8

Merid. Willamette N.F. Deschutes State Oregon

CORNER DIAGRAM



DESCRIBE CORNER MONUMENT FOUND

At the corner I found BT number 2 to be in good condition. I found no trace of BT No. 1. Laying off the bearing and distance from BT No. 2, I found that it coincided with a pile of rocks set into the ground

DESCRIBE BEARING TREES OR OTHER OFFICIAL ACCESSORIES FOUND

DESCRIBE CORNER LOCATION RELATIVE TO NEAR-BY FEATURES, ALSO HOW TO REACH CORNER

PHOTO IDENTIFICATION DATA

Photo No. \_\_\_\_\_  
Filed At. \_\_\_\_\_  
Object Ident. \_\_\_\_\_  
Ident. By \_\_\_\_\_  
*Signature*

PLANE COORDINATE POSITION DATA

State \_\_\_\_\_ Zone \_\_\_\_\_  
X \_\_\_\_\_  
Y \_\_\_\_\_  
Estab. By \_\_\_\_\_  
*Agency*

Signature  
**H. M. Van Horn**

Title  
**Eng. Tech.**

Division  
**SO**

Headquarters

Date  
**2-6-73**

7100-52 (3/68)

6

7

8

2

3

4

5

CORNER RECORD (PERPETUATION)

MONUMENT: DESCRIBE NEW MONUMENT SET, OR WORK DONE TO PRESERVE EXISTING MONUMENT.

I accepted this as the corner. I blazed and scribed one new BT. I monumented the corner by setting a 2-inch galvanized iron pipe w/brass cap, 30 inches long, 24 inches into the ground and marked it:

1/4  $\frac{S\ 8}{S\ 17}$

Reg.No.622

9

ACCESSORIES : DESCRIBE NEW BT'S WITNESS OBJECTS ETC. ESTABLISHED, OR WORK DONE TO PRESERVE EXISTING EVIDENCE from which:

(1) A ponderosa pine 10 inches diameter, scribed 1/4 S8BT, bears N42°E a distance of 61.3 feet to a 60d nail in the base of the tree.

(2) A ponderosa pine 20 inches in diameter bears S50°W a distance of 12.5 feet to a 60d Nail in the base of the tree.

12/86 Walt Miller (MTC)

Replaced stump in SW with a 12" P. pine br. S 12° E @ 58.3', to a 60-d spike in WSW base, MKD 1/4 S17BT

10

Work Done By. Wm. F. Steers, Jr title R.L.S. Date 1-25-65 State Registration No. or Agency \_\_\_\_\_

Certified Cor. Record Prepared ? Yes  No \_\_\_\_\_ Filed At: Lake County Courthouse Date \_\_\_\_\_

11

REMARKS

See file: T25S R12E

12

Index File No.

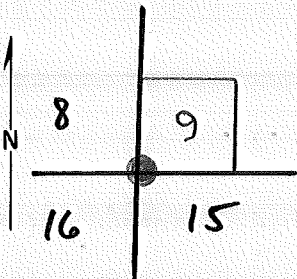
T. 25S. R. 12 E. M.

Tract or Surv. No.

Cor. J-07 13

Index  
File No. J-9CORNER RECORD (SEARCH)  
(Ref. FSM 7151.4)Tract or  
Survey No. \_\_\_\_\_ Cor. No. J-9T 25 S R. 12 E R.D. Fort Rock County LakeMerid. Willamette N.F. Deschutes State Oregon

## CORNER DIAGRAM



## DESCRIBE CORNER MONUMENT FOUND

At the corner, I found BT Nos. 1 and 4 to be in good condition. I found no trace of BT No. 2. There is a rotten stump at the correct location for BT No. 3. A pile of rocks is located the bearing and distance from BT No. 1 and 4.

## DESCRIBE BEARING TREES OR OTHER OFFICIAL ACCESSORIES FOUND

## PHOTO IDENTIFICATION DATA

Photo No. \_\_\_\_\_

Filed At. \_\_\_\_\_

Object Ident. \_\_\_\_\_

Ident. By \_\_\_\_\_

*Signature*

## PLANE COORDINATE POSITION DATA

State \_\_\_\_\_ Zone \_\_\_\_\_

X \_\_\_\_\_

Y \_\_\_\_\_

Estab. By \_\_\_\_\_

*Agency*Signature  
H. M. Van HornTitle  
Eng. Tech.Division  
SO

Headquarters

Date  
2-6-73

7100-52 (3/68)

5



**CORNER RECORD (PERPETUATION)**

**MONUMENT: DESCRIBE NEW MONUMENT SET, OR WORK DONE TO PRESERVE EXISTING MONUMENT**

I accepted this as the corner and blazed and scribed two additional bearing trees. I monumented the corner with a 30-inch galvanized iron pipe w/brass cap set 24 inches into the ground and marked it:

T25S, R12E  
~~S8|S9~~  
~~S17|S16~~

Reg.No. 622

9

**ACCESSORIES : DESCRIBE NEW BT'S WITNESS OBJECTS ETC. ESTABLISHED, OR WORK DONE TO PRESERVE EXISTING EVIDENCE**

from which:

- (1) A ponderosa pine 20 inches in diameter bears N33°E a distance of 78.3 feet to a 60d nail in the base of the tree.
- (2) A ponderosa pine 29 inches in diameter, scribed T25S, R12E, S8BT, bears N89°W a distance of 57.2 feet to a 60d nail in the base of the tree.
- (3) A ponderosa pine 24 inches in diameter, scribed T25S, R12E, S17BT, bears S40°W a distance of 39.7 feet to a 60d nail in the base of the tree.
- (4) A ponderosa pine, 27 inches in diameter, bears S23°E a distance of 4.1 feet to a 60d nail in the base of the tree.

10

Work Done By Wm. F. Steers, Jr Title R.L.S. Date 1-25-65 State Registration No. or Agency \_\_\_\_\_

Certified Cor. Record Prepared ? Yes  No \_\_\_\_\_ Filed At: Lake County Courthouse Date \_\_\_\_\_ 11

**REMARKS**

See file: T25S R12E - 12/86 Walt Miller PLS 2111 Added 4 BTs . . .  
 A 9" p. pipe brs N53°E @ 34.4' to a 60d nail SE base, MK'd T25SR12ES9BT  
 " 4" " " S01°E @ 40.7' " " " ENE " " "XBT"  
 " 7" " " S 27°½ W @ 15.7 " " " ESE " " T25SR12ES17BT  
 " 4" " " N28½°W @ 19.0' " " " SW " " "XBT"

12

Index File No. T. 25 S. R. 12 E. M. Tract or Surv. No. \_\_\_\_\_ Cor. J-09 13

Index

File No. J-13

## CORNER RECORD (SEARCH)

(Ref. FSM 7151.4)

Tract or

Survey No. \_\_\_\_\_

Cor.

No. J-13T 25 S R. 12 E

R.D.

Fort Rock

County

LakeMerid. Willamette

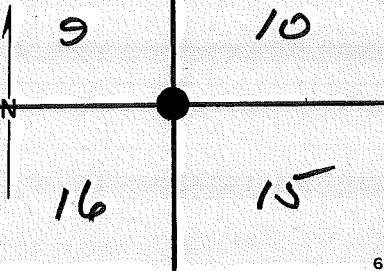
N.F.

Deschutes

State

Oregon

## CORNER DIAGRAM



## DESCRIBE CORNER MONUMENT FOUND

## DESCRIBE BEARING TREES OR OTHER OFFICIAL ACCESSORIES FOUND

Bearing tree No. 3 is a partially uprooted, decayed stump. There were several fallen decayed trees which were possible bearing trees but verification was impossible.

## PHOTO IDENTIFICATION DATA

Photo No. \_\_\_\_\_

Filed At. \_\_\_\_\_

Object Ident. \_\_\_\_\_

Ident. By \_\_\_\_\_

*Signature*

## PLANE COORDINATE POSITION DATA

State \_\_\_\_\_ Zone \_\_\_\_\_

X \_\_\_\_\_

Y \_\_\_\_\_

Estab. By \_\_\_\_\_

*Agency*

Signature

H. M. Van Horn

Title

Eng. Tech.

Division

SO

Headquarters

Date

2-6-73

7100-52 (3/68)

5

## CORNER RECORD (PERPETUATION)

MONUMENT: DESCRIBE NEW MONUMENT SET, OR WORK DONE TO PRESERVE EXISTING MONUMENT  
 I established the corner by laying off the distance and bearing specified in the notes from bearing tree No. 3 and set a 2 inch galvanized ; iron pipe with brass cap, 30 inches long, 24 inches into the ground and marked it:

T25S R12E

S9 | S10

S16 | S15

Reg. No. 622

9

ACCESSORIES : DESCRIBE NEW BT'S WITNESS OBJECTS ETC. ESTABLISHED, OR WORK DONE TO PRESERVE EXISTING EVIDENCE  
 from which:

A lodgepole pine, 7 inches in diameter, scribed T25SR12ES10BT, bears N77°E., a distance of 13.9 feet

A lodgepole pine, 8 inches in diameter, scribed T25SR12ES9BT, bears N19°W., a distance of 18.6 feet

A lodgepole pine, 7 inches in diameter, scribed T25SR12ES16BT, bears S52°W., a distance of 4.4 feet

A lodgepole pine, 10 inches in diameter, scribed T25SR12ES15BT, bears S16°E., a distance of 14.9 feet

10

Work Done By Wm. F. Steers, Jr. Title R.L.S. Date 1-25-65 State Registration No. 622  
 or Agency

Certified Cor. Record Prepared ? Yes  No Filed At: Lake County Courthouse Date

11

See File T25S R12E

REMARKS

Index File No. T. 25 S. R. 12 E M. Tract or Surv. No. Cor. J-13

12

13

Index  
File No. J-15

**CORNER RECORD (SEARCH)**

(Ref. FSM 7151.4)

Tract or Survey No. \_\_\_\_\_ Cor. No. J-15

T 25 S R. 12 E

R.D. Fort Rock County Lake

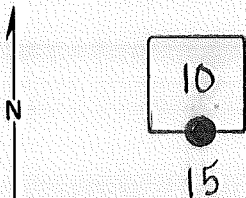
3/4 Cor. Sec. 10

Merid. Willamette

N.F. Deschutes State Oregon

N/4 Cor. Sec. 15

CORNER DIAGRAM



DESCRIBE CORNER MONUMENT FOUND

At the corner I found both bearing trees and a pile of rocks set 8 inches in the ground which is in the correct location according to the notes.

2

DESCRIBE BEARING TREES OR OTHER OFFICIAL ACCESSORIES FOUND

PHOTO IDENTIFICATION DATA

Photo No. \_\_\_\_\_  
Filed At. \_\_\_\_\_  
Object Ident. \_\_\_\_\_  
Ident. By \_\_\_\_\_  
*Signature*

DESCRIBE CORNER LOCATION RELATIVE TO NEAR-BY FEATURES, ALSO HOW TO REACH CORNER

3

PLANE COORDINATE POSITION DATA

State \_\_\_\_\_ Zone \_\_\_\_\_  
X \_\_\_\_\_  
Y \_\_\_\_\_  
Estab. By \_\_\_\_\_  
*Agency*

4

Signature  
**H. M. VanHorn**

Title Division Headquarters  
**Eng. Tech. SO**

Date  
**2/6/73**

7100-52 (3/68)

5

CORNER RECORD (PERPETUATION)

MONUMENT: DESCRIBE NEW MONUMENT SET, OR WORK DONE TO PRESERVE EXISTING MONUMENT

I accepted the pile of rocks as the true corner and set a 2 inch galvanized iron pipe with brass cap, 30 inches long, 24 inches into the ground and marked it:

$\frac{1}{4}$  S10  
S15

Reg. No. 622

9

ACCESSORIES : DESCRIBE NEW BT'S WITNESS OBJECTS ETC. ESTABLISHED, OR WORK DONE TO PRESERVE EXISTING EVIDENCE

From which:

A Ponderosa Pine, 30 inches in diameter, bears N57°W.,  
a distance of 16.0 feet

A Ponderosa Pine, 11 inches in diameter, bears S32°E.,  
a distance of 20.6 feet

12/86 - Walt Miller (Pls 2111) added 1 BT, . . .

A 1 1/2" Pipe brs N 37°E @ 108.7' to a 60rd spike in WNW base mkd "1/4 S10 BT" 10

Work Done By Wm. F. Steers, Jr. Title R.L.S. Date 1-25-65 State Registration No. 622  
or Agency

Certified Cor. Record Prepared? Yes  No  Filed At: Lake County Courthouse Date \_\_\_\_\_ 11

REMARKS

See file: T25S R12E

LAND CORNER RECORD

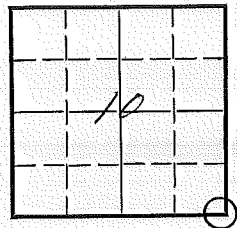
(Rectangular)

J-17

5680-2

1. T. 25S R. 12E No. J-17 Cor. Sec Mer. Will State Ore N. F. Deschutes Dist. Forest Rock

2. Corner Status



3. Original Description \_\_\_\_\_ Vol. \_\_\_\_\_ Page \_\_\_\_\_ Where Recorded \_\_\_\_\_

4. Description of Corners: Post 36" Above Ground

5. Investigation Notes: There are no BTs for the Post. The BTs would be 110 Ft North of the Post.

7. Photo Identification

Photo No. \_\_\_\_\_

Ident. By: \_\_\_\_\_

8. Plane Coordinate Position Data

State \_\_\_\_\_ Zone \_\_\_\_\_

X \_\_\_\_\_

Y \_\_\_\_\_

Estab. By \_\_\_\_\_

Field Book No. \_\_\_\_\_

Where Filed \_\_\_\_\_

9. Evaluation

Authentic \_\_\_\_\_

Needs Verif. \_\_\_\_\_ Monument N

Re-estab.  Survey

Land Status Pub. & Private

6. Signed M L C Title \_\_\_\_\_ Date 2-3-59

# PERPETUATION RECORD

10. Monument:

11. Accessories

Field Book \_\_\_\_\_ Page \_\_\_\_\_

12. Set By \_\_\_\_\_ Title \_\_\_\_\_

License \_\_\_\_\_ Agency \_\_\_\_\_ Date \_\_\_\_\_

13. Recorded By \_\_\_\_\_ Volume \_\_\_\_\_ Page \_\_\_\_\_  
(Agency)

(Date) (City) (County) (State)

14. Remarks:



U. S. Department of Agriculture  
FOREST SERVICE

*Reserves* NATIONAL FOREST

CORNERS OF THE PUBLIC SURVEY

T. 25 S. R. 12 E. N Mer.

Sec. Corner common to Sections

12, 11, 10, and 17

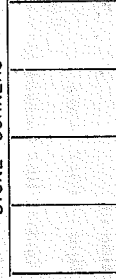
Corner consists of a Post (not) in place

State condition good

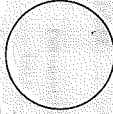
Dimensions above ground 36 inches.

Sketch grooves, letters, figures, or notches, on proper face or edge.

STONE CORNERS



METAL CORNERS

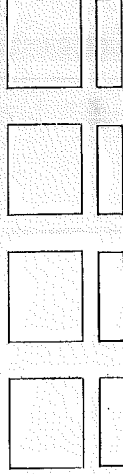


N W S E

Mound of \_\_\_\_\_ is located \_\_\_\_\_

Pits are located \_\_\_\_\_

Sketch markings of Bearing Trees (or Rocks) in proper box and fill blanks below, giving bearings from Corner to Trees and Distances in Links.



Species \_\_\_\_\_

Diameter \_\_\_\_\_

Bearing \_\_\_\_\_

Distance \_\_\_\_\_

Do you believe this to be a genuine Land Office Corner? No

If not, why? There are no B.T.s for this Post. There B.T.s would be Post

Address 110 FT NORTH of the Post

7-3-59

(Date)

*W. L. C.*

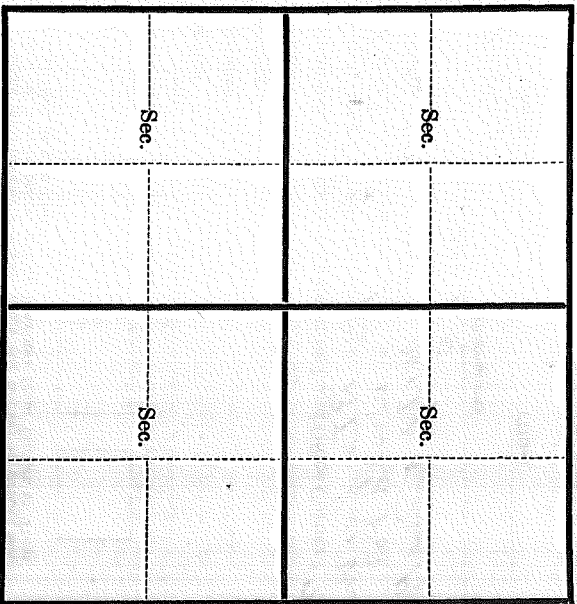
(Signature)

(Title)

Form 874-9

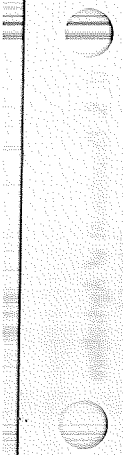
Rev. Mar. 1953

T. \_\_\_\_\_ R. \_\_\_\_\_ Mer.  
(Make sketch of topography near Corner and show section line markers thus "X")



Metal Location Poster is on a \_\_\_\_\_  
tree \_\_\_\_\_ inches diameter, on the \_\_\_\_\_  
side of \_\_\_\_\_ from which  
this Corner bears \_\_\_\_\_ ° \_\_\_\_\_ ' \_\_\_\_\_ Chains.  
(Bearing) (Distance)  
Section line marker between Secs. \_\_\_\_\_ and \_\_\_\_\_ is on  
a \_\_\_\_\_ on the \_\_\_\_\_ (Name of road, trail, etc.)  
(Tree, post, etc.)  
located \_\_\_\_\_ chains E, W, N, S, from Sec. Cor.;  $\frac{1}{4}$  Cor.; Witness Cor.  
(Cross out nonapplicable)  
Give any further facts needed to find Corner again:

-----  
-----  
-----  
-----  
-----  
-----  
-----  
-----



USDA-FOREST SERVICE

Index  
File No. \_\_\_\_\_

CORNER RECORD (SEARCH)

(Ref. FSM 7151.4)

Tract or  
Survey No. \_\_\_\_\_

Cor.  
No. J-21

T 255 R. 12E

R.D. FL. ROCK

County LAKE

SE COR. OF

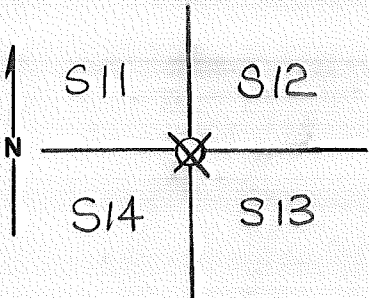
Merid. WILLAMETTE

N.F. DESC.

State OR

SEC. 11

CORNER DIAGRAM



DESCRIBE CORNER MONUMENT FOUND

S.F.N.F.

DESCRIBE BEARING TREES OR OTHER OFFICIAL ACCESSORIES FOUND

DEAD & DOWN S.E. BT SCRIBED "255 S13 BT"  
" " " N.E. BT SUSPENDED BLOWDOWN SCRIBING  
VIS.

PHOTO IDENTIFICATION DATA

Photo No. \_\_\_\_\_  
 Filed At. \_\_\_\_\_  
 Object Ident. \_\_\_\_\_  
 Ident. By \_\_\_\_\_

*Signature*

NO SIGN S.W. BT  
NO SIGN N.W. BT.

PLANE COORDINATE POSITION DATA

State \_\_\_\_\_ Zone \_\_\_\_\_  
 X \_\_\_\_\_  
 Y \_\_\_\_\_  
 Estab. By \_\_\_\_\_

*Agency*

Signature R. TAYLOR Title ST

Division CS Headquarters SO

Date 7/1/87

7100-52-(3/68)

**CORNER RECORD (PERPETUATION)**

**MONUMENT: DESCRIBE NEW MONUMENT SET, OR WORK DONE TO PRESERVE EXISTING MONUMENT**

**ACCESSORIES: DESCRIBE NEW BT'S WITNESS OBJECTS ETC. ESTABLISHED, OR WORK DONE TO PRESERVE EXISTING EVIDENCE**

Work Done By \_\_\_\_\_ Title \_\_\_\_\_ Date \_\_\_\_\_ State Registration No. \_\_\_\_\_  
 or Agency \_\_\_\_\_  
 Certified Cor. Record Prepared? Yes No Filed At: \_\_\_\_\_ Date \_\_\_\_\_

**HISTORY: Post** **REMARKS**

20" PINE, S53°E, 88 lks  
 12" " , N73°E, 54 lks  
 18" " , N62°W, 622(?) lks  
 10" " , S27°W, 30 lks

Index File No. T. 255 R. 12E M. WM Tract or Surv. No. \_\_\_\_\_ Cor. J-25 13  
 U.S. G.P.O. 1977-725-576 586

USDA-FOREST SERVICE

Index  
File No. \_\_\_\_\_

CORNER RECORD (SEARCH)

(Ref. FSM 7151.4)

Tract or  
Survey No. \_\_\_\_\_

Cor.  
No. J-23

T 253 R. 12E

R.D. FT. ROCK County LAKE

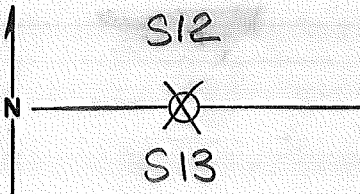
N 1/4 COR. OF

Merid. WILL

N.F. DESC. State OR

SEC. 13

CORNER DIAGRAM



DESCRIBE CORNER MONUMENT FOUND

S, F, N, F.

DESCRIBE BEARING TREES OR OTHER OFFICIAL ACCESSORIES FOUND

FOUND BLADE FROM NE OR SW BT - "BT" VISABLE & CHAIN NOTCH NEAR A BUNCH OF DECAYED WOOD, ? ROOT WAD? IF BLADE IS SW BT A ROTTEN LOG FIT N.E. TREE. NO TREES IN AREA IF BLADE IS N.E. BT. ???

PHOTO IDENTIFICATION DATA

Photo No. \_\_\_\_\_  
Filed At. \_\_\_\_\_  
Object Ident. \_\_\_\_\_  
Ident. By \_\_\_\_\_  
*Signature*

DESCRIBE CORNER LOCATION RELATIVE TO NEAR-BY FEATURES, ALSO HOW TO REACH CORNER

LOCATED IN VALLEY IN SAGE FLAT 500-600' ± W. OF TRACK ROAD

PLANE COORDINATE POSITION DATA

State \_\_\_\_\_ Zone \_\_\_\_\_  
X \_\_\_\_\_  
Y \_\_\_\_\_  
Estab. By \_\_\_\_\_  
*Agency*

Signature R. TAYLOR

Title ST

Division CS

Headquarters SO

Date 7-1-87

7100-52-(3/68)

CORNER RECORD (PERPETUATION)

MONUMENT: DESCRIBE NEW MONUMENT SET, OR WORK DONE TO PRESERVE EXISTING MONUMENT

9

ACCESSORIES: DESCRIBE NEW BT'S WITNESS OBJECTS ETC. ESTABLISHED, OR WORK DONE TO PRESERVE EXISTING EVIDENCE

10

Work Done By \_\_\_\_\_ Title \_\_\_\_\_ Date \_\_\_\_\_ State Registration No. or Agency \_\_\_\_\_

Certified Cor. Record Prepared? Yes No Filed At: \_\_\_\_\_ Date \_\_\_\_\_

11

HISTORY: Post  
20", S69°W, 56 lts  
10", N31°E, 165 lts

REMARKS

12

Index File No. T. 255 R. 12 E M. W. M

Tract or Surv. No.

U.S. G.P.O. 1977-725-576 Cor. J-2-3 13 586

USDA-FOREST SERVICE

Index  
File No. 2159

CORNER RECORD (SEARCH)

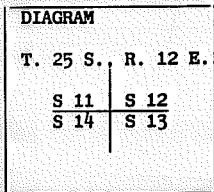
(Ref. FSM 7151.4)

Tract or Survey No. \_\_\_\_\_  
Cor. No. J-21

T 25 S. R. 12 E. R.D. Ft. Rock County Lake NW COR

Merid. Wmt N.F. Deschutes State OR Sec. 13

CORNER DIAGRAM



DESCRIBE CORNER MONUMENT FOUND

SF/NF

2

DESCRIBE BEARING TREES OR OTHER OFFICIAL ACCESSORIES FOUND

Description of corner evidence found:  
No evidence of original post was found.  
1. NE BT is a Pine windfall with face and scribing visible.  
2. SE BT is a Pine windfall with face and scribing visible.  
3. No evidence of the SW BT was found.  
4. A thorough search of the NW quadrant, including measurements to 22 links, 62 links and 622 links produced no evidence of the original BT. I question the GLO distance of 622 links since there were several large trees closer to the corner and of the proper vintage in that quadrant. Also, while it wasn't prohibited, the Instructions for that era recommended not going further than 300 links to a bearing object or tree.

The 2 existing BT's did not fit the GLO bearing and distance. By setting the corner at a distance/distance intersect point BT 1. bears N.63°E., 35.6 ft. (54 lks.) and BT 2. bears S.33°E., 58.1 ft. (88 lks.).

PHOTO IDENTIFICATION DATA

Photo No. \_\_\_\_\_  
Filed At. \_\_\_\_\_  
Object Ident. \_\_\_\_\_  
Ident. By \_\_\_\_\_  
*Signature*

PLANE COORDINATE POSITION DATA

State \_\_\_\_\_ Zone \_\_\_\_\_  
X \_\_\_\_\_  
Y \_\_\_\_\_  
Estab. By \_\_\_\_\_  
*Agency*

Signature Walter B. Ham Title PLS Division CS Headquarters SO Date 1/92 FS-7100-52 (3/68)



## CORNER RECORD (PERPETUATION)

MONUMENT: DESCRIBE NEW MONUMENT SET, OR WORK DONE TO PRESERVE EXISTING MONUMENT

T 25 S  
R  
12 S 11 | S 12  
E S 14 | S 13  
PLS 2396  
1991

Description of monument and accessories I established to perpetuate the original location of this corner:  
 At the point established, set a 2 1/2 " dia. X 30" long galvanized steel pipe surmounted by a 2 1/2" brass cap; rising 3 " above ground. A penny at base of pipe. A steel fence post bears North, 3 ft.  
 Lodgepole Pine, 13" dia., bears N.69°E., 41.4 ft., marked T 25 S R 12 E S 12 BT.  
 Lodgepole Pine, 10" dia., bears S.32°E., 31.2 ft., marked T 25 S R 12 E S 13 BT.  
 Lodgepole Pine, 8" dia., bears S.21°W., 53.2 ft., marked T 25 S R 12 E S 14 BT.  
 Lodgepole Pine, 10" dia., bears N.45°W., 42.9 ft., marked T 25 S R 12 E S 11 BT.

**RESERVE EXISTING EVIDENCE**

Distances measured to side center of tree.  
 Bearings measured with a staff compass set at 19 1/2° East, Magnetic Declination.  
 Nail with brass washer marked LS 2396 between the B & T in the scribing.

Work Done By B. Ham Title PLS Date 1/92 State Registration No. 2396  
 or Agency  
 Certified Cor. Record Prepared?  Yes No Filed At: Lake Co. Date 1/15/92

**REMARKS**

History of original corner establishment:  
 GLO Survey of 1880 by Thompson, Meldrum & Moore.  
 Set Pine post 4 ft. long, 3 ins. sq. for cor. to secs. 11, 12, 13 & 14. From which a:  
 Pine, 10 ins. dia., bears S27°W, 30 lks. dist.  
 " 20 " " " S53°E, 88 " "  
 " 12 " " " N73°E 54 " "  
 " 18 " " " N62°W 622 " "

Index File No. 2159 T. 25 R. 12 M. 12 Tract or Surv. No. 12 Cor. J-2 13  
 GPO: 1986 O- 439-095

D-7100-52d (10/78)  
USDA-FOREST SERVICE

Index  
File No. 0161

CORNER RECORD (SEARCH) Contract or  
(Ref. FSM 7151.4) Survey No. \_\_\_\_\_

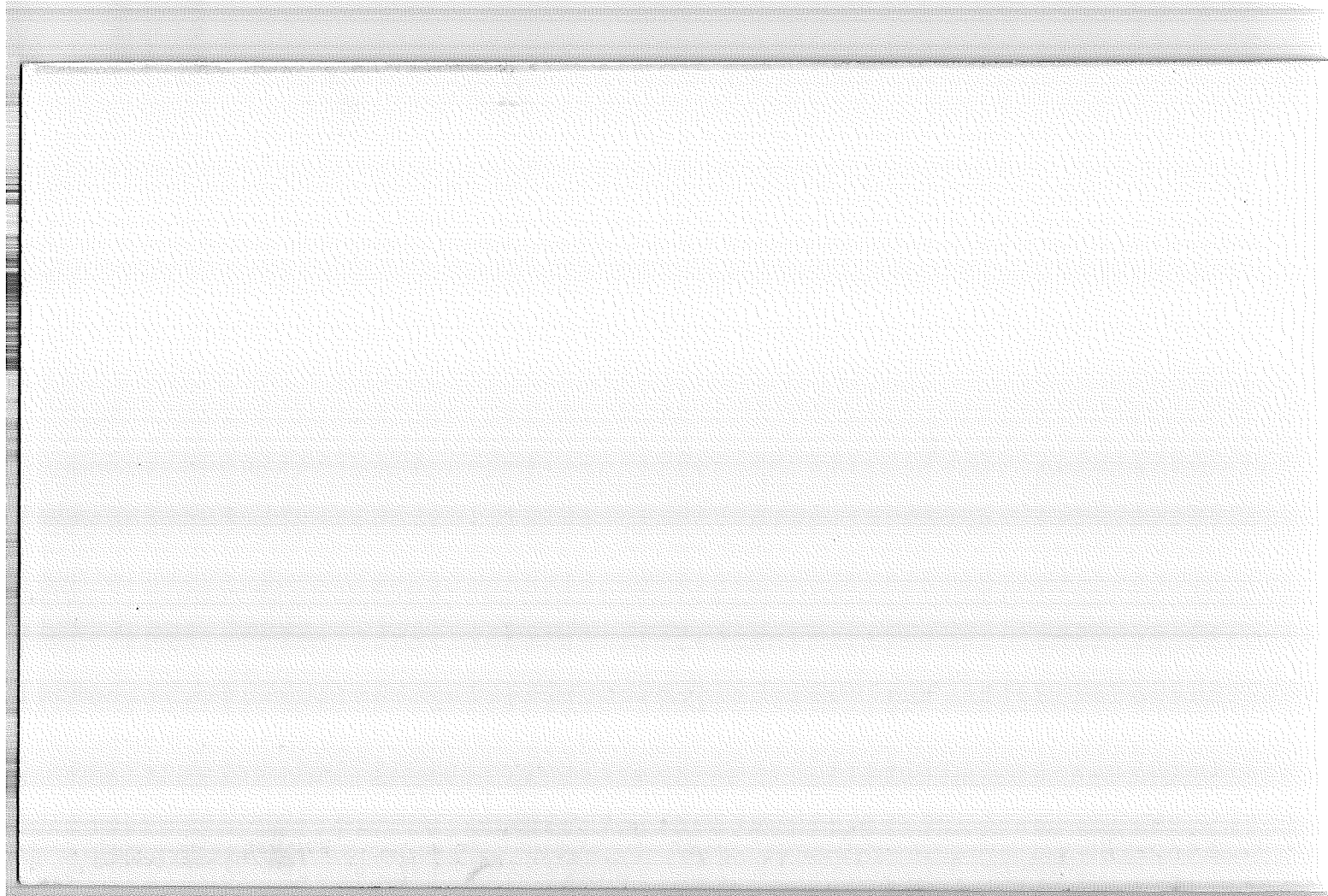
L-01 ~~2-21~~  
Cor. No. A-25

T 25 S. R. 12 E. R.D. CRESCENT County KLAMATH W/4 Cor. of 18  
Merid. WILLAMETTE N.F. DESCHUTES State OREGON Section \_\_\_\_\_

SEE: L-25 T. 25 S., R. 11 E. W.M.

BCI

==

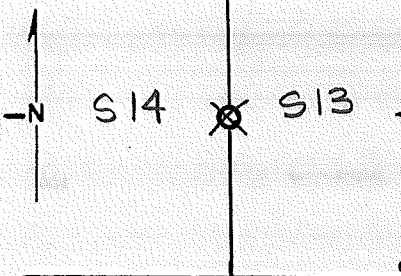


USDA-FOREST SERVICE D-7100-52(2/82)

Index File No. \_\_\_\_\_ CORNER RECORD (SEARCH) Contract or Survey No. \_\_\_\_\_ Cor. No. L-21  
T 25 S. R. 12 E. R.D. FT ROCK County LAKE N.F. Deschutes State Oregon Section 13  
Merid. Willamette N.F. Deschutes State Oregon Section 13

CORNER DIAGRAM per legend

DESCRIBE CORNER MONUMENT FOUND



S F 11 F

DESCRIBE BEARING TREES OR OTHER OFFICIAL ACCESSORIES FOUND

SW TREE DEAD & DOWN "1/45" BOTTOM BLAZE HEALED

PHOTO IDENTIFICATION DATA

NO SIGN OF NE

Photo No. \_\_\_\_\_  
Filed At. \_\_\_\_\_  
Object Ident. \_\_\_\_\_  
Ident. By \_\_\_\_\_  
Signature \_\_\_\_\_

DESCRIBE CORNER LOCATION RELATIVE TO NEAR-BY FEATURES, ALSO HOW TO REACH CORNER

100' N. OF SPUR RD, So. OF FENCE

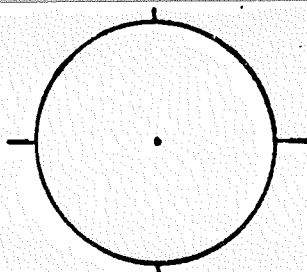
CORNER LEGEND:

- FS or Contr.    Unverified    Other
- ◇    Searched For/Not Found
- ⊗    ⊗    Evidence Found/Accept.
- ◆    Permanent Mon. Set/Fd.

Searched By: R. TAYLOR Title ST Division CS Headquarters SO Date 11/17/83

CORNER RECORD (PERPETUATION)

MONUMENT STAMPED



MONUMENT. DESCRIBE NEW MONUMENT SET, OR WORK DONE TO PRESERVE EXISTING MONUMENT

ACCESSORIES DESCRIBE NEW BT'S WITNESS OBJECTS ETC. ESTABLISHED, OR WORK DONE TO PRESERVE EXISTING EVIDENCE

Work Done By \_\_\_\_\_ Title \_\_\_\_\_ Date \_\_\_\_\_ State Registration No. or Agency \_\_\_\_\_

Flat or ~~Entered~~ Cor Record Prepared? Yes  No  Filed At \_\_\_\_\_ Co. Surveyor's Office \_\_\_\_\_ Date \_\_\_\_\_

History of Surveys, G.L.O., etc.

20" PINE, S 69° W, 56 lks. (37°)  
10" PINE, N 81° E, 165 lks. (108°)

Index File No. T. 25 S., R. 12 E., W.M. Contract or Surv. No. Cor. L-21

Index

File No. 2561

CORNER RECORD (SEARCH)

(Ref. FSM 7151.4)

Contract or

Survey No. \_\_\_\_\_

Cor.  
No.

L-25

T 25 S. R. 12 E. R.D.

Ft Rock

County

Lake

E/4

Cor. of

Merid. WILLAMETTE

N.F.

DESCHUTES

State

OREGON

Section

13

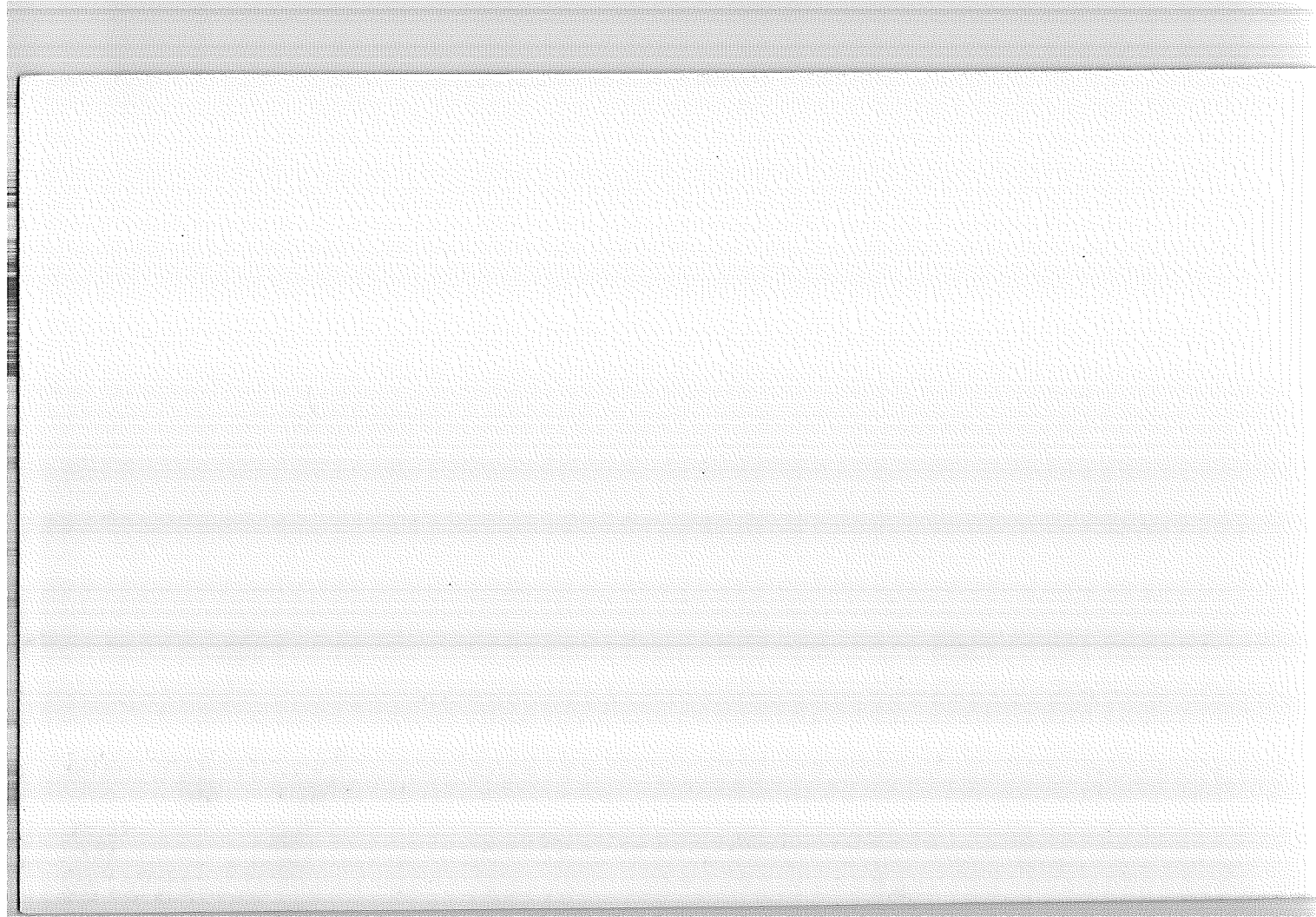
SEE: L-01

T. 25

S., R. 13

E.W.M.

BCSP





Index  
File No. \_\_\_\_\_  
Tract or Survey No. \_\_\_\_\_ Cor. No. N-01  
R.D. CRESCENT County KLAMATH/LAKE  
Merid. WILLAMETTE N.F. DESCHUTES State OREGON

SEE: N-25  
T25S R11E

BC set by  
Steens 1963

N-01

Index  
File No.

CORNER RECORD (SEARCH)  
(Ref. FSM 7151.4)

Tract or  
Survey No.

Cor.  
No. N-01

25 S. R. 12 E. R.D. CRESCENT County KLAMATH/LAKE  
Merid. WILLAMETTE N.F. DESCHUTES State OREGON

SEE: N-25

T25S R11E

BC set by  
Steers 1963

N-01

# LAND CORNER RECORD

(Rectangular)

N-17

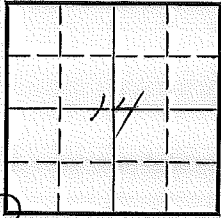
5680-2

1. T 25S R 12E No 17-12 Cor. Sec Mer. Will State Okla N. F. Daschubee Dist. Fort Rock

2. Corner Status

3. Original Description \_\_\_\_\_ Vol. \_\_\_\_\_ Page \_\_\_\_\_ Where Recorded \_\_\_\_\_

4. Description of Corners: Post in good condition



5. Investigation Notes: Dts for this corner would put the corner 50ft North of where post is

7. Photo Identification

Photo No. \_\_\_\_\_

Ident. By: \_\_\_\_\_

8. Plane Coordinate Position Data

State \_\_\_\_\_ Zone \_\_\_\_\_

X \_\_\_\_\_

Y \_\_\_\_\_

Estab. By \_\_\_\_\_

Field Book No. \_\_\_\_\_

Where Filed \_\_\_\_\_

9. Evaluation

Authentic \_\_\_\_\_

Needs Verif. \_\_\_\_\_ Monument X

Re-estab. ✓ Survey \_\_\_\_\_

Land Status F.L. & B. into

6. Signed M L C Title \_\_\_\_\_ Date 7-3-59

# PERPETUATION RECORD

10. Monument:

11. Accessories

12. Set By \_\_\_\_\_ Title \_\_\_\_\_  
License \_\_\_\_\_ Agency \_\_\_\_\_ Date \_\_\_\_\_

13. Recorded By \_\_\_\_\_ Volume \_\_\_\_\_ Page \_\_\_\_\_  
(Agency) \_\_\_\_\_  
(Date) \_\_\_\_\_ (City) \_\_\_\_\_ (County) \_\_\_\_\_ (State) \_\_\_\_\_

14. Remarks:

U. S. Department of Agriculture

FOREST SERVICE

*D. Dechuster*  
NATIONAL FOREST

CORNERS OF THE PUBLIC SURVEY

T. 23 S R. 12 E W Mer.

Sec Corner common to Sections  
15, 14, 22, and 23

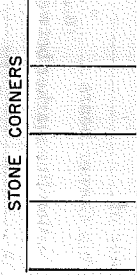
Corner consists of a PAV (not) in place

State condition good

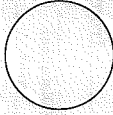
Dimensions above ground \_\_\_\_\_ inches.

Sketch grooves, letters, figures, or notches, on proper face or edge.

STONE CORNERS



METAL CORNERS



N W S E

Mound of \_\_\_\_\_ is located \_\_\_\_\_

Pits are located \_\_\_\_\_

Sketch markings of Bearing Trees (or Rocks) in proper box and fill blanks below, giving bearings from Corner to Trees and Distances in Links.


Species \_\_\_\_\_

Diameter \_\_\_\_\_

Bearing \_\_\_\_\_

Distance \_\_\_\_\_

Do you believe this to be a genuine Land Office Corner? No

If not, why? The 1975 for the 2007 would put the cor 3.4 FT north of where the post is

7-3-59

(Date)

MJC

(Signature)

(Title)

Form 8749

Rev. Mar. 1953



U. S. Department of Agriculture

FOREST SERVICE

*D. Deane* NATIONAL FOREST

CORNERS OF THE PUBLIC SURVEY

T. 28 S. R. 12 E N Mer.

S Sec Corner common to Sections

15, 14, 22, and 23

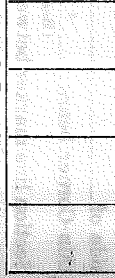
Corner consists of a POST (set) in place

State condition good

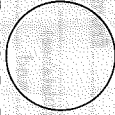
Dimensions above ground \_\_\_\_\_ inches.

Sketch grooves, letters, figures, or notches, on proper face or edge.

STONE CORNERS



METAL CORNERS



N W S E

Mound of \_\_\_\_\_ is located \_\_\_\_\_

Pits are located \_\_\_\_\_

Sketch markings of Bearing Trees (or Rocks) in proper box and fill blanks below, giving bearings from Corner to Trees and Distances in Links.

<input type="checkbox"/>	<input type="checkbox"/>	<input type="checkbox"/>	<input type="checkbox"/>
<input type="checkbox"/>	<input type="checkbox"/>	<input type="checkbox"/>	<input type="checkbox"/>

Species \_\_\_\_\_

Diameter \_\_\_\_\_

Bearing \_\_\_\_\_

Distance \_\_\_\_\_

Do you believe this to be a genuine Land Office Corner? No

If not, why? The post is of iron & on the corner would put the corner 50 FT north of where the post is

MJC  
(Signature)

7-3-59  
(Date)

(Title)

T. \_\_\_\_\_ R. \_\_\_\_\_ Mer.

(Make sketch of topography near Corner and show section line markers thus "X")

Sec.		Sec.	
Sec.		Sec.	

Metal Location Poster is on a \_\_\_\_\_

tree \_\_\_\_\_ inches diameter, on the \_\_\_\_\_

side of \_\_\_\_\_ from which

this Corner bears \_\_\_\_\_° \_\_\_\_\_' \_\_\_\_\_" Chains.

(Bearing) (Distance)

Section line marker between Secs. \_\_\_\_\_ and \_\_\_\_\_ is on

a \_\_\_\_\_ on the \_\_\_\_\_

(Tree, post, etc.) (Name of road, trail, etc.)

located \_\_\_\_\_ chains E., W., N., S., from Sec. Cor.;  $\frac{1}{2}$  Cor.; Witness Cor.

(Cross out nonapplicable)

Give any further facts needed to find Corner again:

\_\_\_\_\_

\_\_\_\_\_

\_\_\_\_\_

\_\_\_\_\_

\_\_\_\_\_

\_\_\_\_\_

\_\_\_\_\_

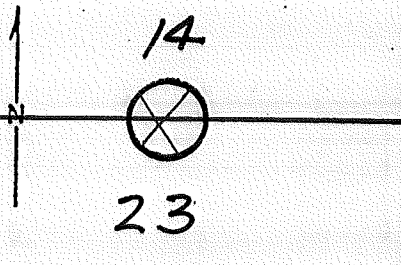
Index File No. 25 S. R. 12 E  
Merid. WMT

CORNER RECORD (SEARCH)  
(Ref. FSM 7151.4)

Tract or Survey No. \_\_\_\_\_  
Cor. No. N-19  
5/4 Co. Sec. 14  
N/4 Co. Sec. 23

R.D. FORT ROCK County LAKE  
N.F. DES. State OR.

CORNER DIAGRAM



DESCRIBE CORNER MONUMENT FOUND

DESCRIBE BEARING TREES OR OTHER OFFICIAL ACCESSORIES FOUND

~~7" P. PINE~~  
7" P. PINE N60E 20'  
7" P. PINE S40\_ 10'

PHOTO IDENTIFICATION DATA

Photo No. \_\_\_\_\_  
Filed At. \_\_\_\_\_  
Object Ident. \_\_\_\_\_  
Ident. By \_\_\_\_\_  
*Signature*

PLANE COORDINATE POSITION DATA

State \_\_\_\_\_ Zone \_\_\_\_\_  
X \_\_\_\_\_  
Y \_\_\_\_\_  
Estab. By \_\_\_\_\_  
*Agency*

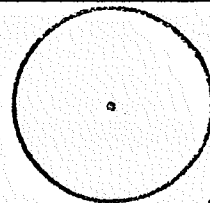
DESCRIBE CORNER LOCATION RELATIVE TO NEAR-BY FEATURES, ALSO HOW TO REACH CORNER

Signature MLC Title \_\_\_\_\_ Division \_\_\_\_\_ Headquarters \_\_\_\_\_ Date 1959 7100-52 (3 63)

CORNER RECORD (PERPETUATION)

MONUMENT  
STAMPED:

MONUMENT: DESCRIBE NEW MONUMENT SET, OR WORK DONE TO PRESERVE EXISTING MONUMENT



9

ACCESSORIES : DESCRIBE NEW BT'S WITNESS OBJECTS ETC. ESTABLISHED, OR WORK DONE TO PRESERVE EXISTING EVIDENCE

10

Work Done By \_\_\_\_\_ Title \_\_\_\_\_ Date \_\_\_\_\_ State Registration No. or Agency \_\_\_\_\_

Certified Cor. Record Prepared ? Yes No Filed At: \_\_\_\_\_ Date \_\_\_\_\_

11

REMARKS

Index File No.

T.

R.

M.

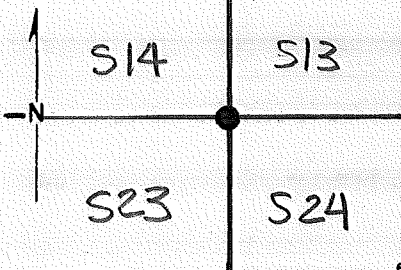
Tract or Surv. No.

Cor. *N-19* <sup>12</sup>/<sub>13</sub>

Index File No. \_\_\_\_\_ CORNER RECORD (SEARCH) Contract or Survey No. \_\_\_\_\_ Cor. No. N-21  
 T 25 S. R. 12 E. R.D. FR. ROCK (Ref. FSM 7151.4) County LAKE NW Cor. of  
 Merid. Willamette N.F. Deschutes State Oregon Section 24

CORNER DIAGRAM per legend

DESCRIBE CORNER MONUMENT FOUND




SPIKE IN ROAD 20 FT SOUTH OF @, STAMPED "BLM 1976"

DESCRIBE BEARING TREES OR OTHER OFFICIAL ACCESSORIES FOUND

62 HIGH ROTTEN P. PINE, N45E, 53 1/2", "BT"

PHOTO IDENTIFICATION DATA

Photo No. \_\_\_\_\_  
 Filed At. \_\_\_\_\_  
 Object Ident. \_\_\_\_\_  
 Ident. By \_\_\_\_\_  
 Signature \_\_\_\_\_

REF. MON 3" BLM BC RSNG 1"  S 52° W, 55° ±

REF. MON 3" BLM BC RSNG 0"  DESCRIBE CORNER LOCATION RELATIVE TO NEAR-BY FEATURES, ALSO HOW TO REACH CORNER

CORNER LEGEND:

- FS or Unverified
- Costr. Other
- ◇ Searched For/Not Found
- ⊗ ⊗ Evidence Found/Accept.
- ◆ Permanent Mon. Set/Fd.

Searched By: R. TAYLOR

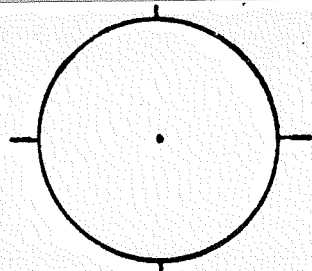
Title ST

Division C5 Headquarters

Date 11/16/83

CORNER RECORD (PERPETUATION)

MONUMENT STAMPED



MONUMENT. DESCRIBE NEW MONUMENT SET, OR WORK DONE TO PRESERVE EXISTING MONUMENT

ACCESSORIES DESCRIBE NEW BT'S WITNESS OBJECTS ETC. ESTABLISHED, OR WORK DONE TO PRESERVE EXISTING EVIDENCE

Work Done By \_\_\_\_\_ Title \_\_\_\_\_ Date \_\_\_\_\_ State Registration No. or Agency \_\_\_\_\_

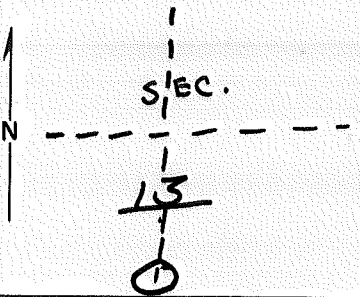
Flat or ~~Other~~ Record Prepared? Yes  No  Filed At \_\_\_\_\_ Co. Surveyor's Office Date \_\_\_\_\_

History of Surveys, G.L.O., etc. J.N. TENNIANT, U.S.G.S. 11/77  
PHOTO IDENTIFICATION  
GS VDOH (LINE 2 EXPOSURE 258)  
MENLO PARK, CA

Index File No. T. 25S., R. 12 E., W.M. Contract or Surv. No. Cor. N-21

Index File No. N-23 CORNER RECORD (SEARCH) (Ref. FSM 7151.4) Tract or Survey No. \_\_\_\_\_ Cor. No. N-23  
 T 25S R. 12E R.D. 03 County LAKE 5/4 Cor. Sec. 13  
 Merid. Will N.F. 01 State ORE N/A Cor. Sec. 24

CORNER DIAGRAM



DESCRIBE CORNER MONUMENT FOUND

NONE

DESCRIBE BEARING TREES OR OTHER OFFICIAL ACCESSORIES FOUND

NONE

PHOTO IDENTIFICATION DATA

Photo No. \_\_\_\_\_  
 Filed At. \_\_\_\_\_  
 Object Ident. \_\_\_\_\_  
 Ident. By \_\_\_\_\_  
 Signature \_\_\_\_\_

N.W. POSSIBLY IS BADLY DECAYED 2<sup>o</sup> HIGH STUMP W/BLADE & AXE MARK, POSSIBLY SCRIBING - NO SIGN OF S.E. TREE (QUESTIONABLE)

PLANE COORDINATE POSITION DATA

State \_\_\_\_\_ Zone \_\_\_\_\_  
 X \_\_\_\_\_  
 Y \_\_\_\_\_  
 Estab. By O. Thingvall  
 Agency \_\_\_\_\_

DESCRIBE CORNER LOCATION RELATIVE TO NEAR-BY FEATURES, ALSO HOW TO REACH CORNER  
 600' W. OF ROAD # 430 ?  
 1600' E. OF ROAD # 200 @ FLAGGING ON EDGE OF TIMBER,  
 500' E. OF FENCE

Signature R. TAYLOR Title Civil Eng. Division CS Headquarters SO Date 10/6/87



CORNER RECORD ( PERPETUATION )

MONUMENT : DESCRIBE NEW MONUMENT SET, OR WORK DONE TO PRESERVE EXISTING MONUMENT

9

ACCESSORIES : DESCRIBE NEW BT'S WITNESS OBJECTS ETC. ESTABLISHED, OR WORK DONE TO PRESERVE EXISTING EVIDENCE

10

Work Done By \_\_\_\_\_ Title \_\_\_\_\_ Date \_\_\_\_\_ State Registration No. or Agency \_\_\_\_\_

Certified Cor. Record Prepared ? Yes No Filed At: \_\_\_\_\_ Date \_\_\_\_\_

11

REMARKS

Index File No. T. R. M. Tract or Surv. No.

Cor. *N-23*<sup>13</sup>

12

Index File No. N-25

CORNER RECORD (SEARCH)  
(Ref. FSM 7151.4)

Tract or Survey No. \_\_\_\_\_ Cor. No. N-25

T 25S R. 12E

R.D. 03

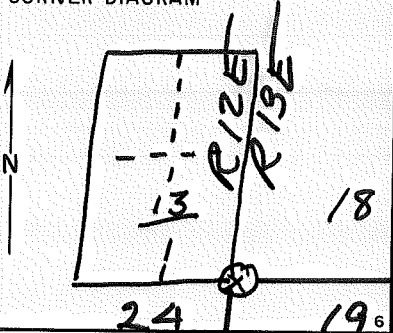
County LAKE

Merid. Will

N.F. 01

State ORE

CORNER DIAGRAM



DESCRIBE CORNER MONUMENT FOUND

Material: Basalt Stone size: 5" x 12 x 19"  
Height above ground - 12" Condition: poor  
Markings - NONE SFNF (7/6/87)

DESCRIBE BEARING TREES OR OTHER OFFICIAL ACCESSORIES FOUND

NONE

PHOTO IDENTIFICATION DATA

Photo No. ESF 29-74  
Filed At. Trans. plan  
Object Ident. DIRECT  
Ident. By \_\_\_\_\_  
Signature \_\_\_\_\_

DESCRIBE CORNER LOCATION RELATIVE TO NEAR-BY FEATURES, ALSO HOW TO REACH CORNER

SEARCH AREA FALLS IN MIDDLE OF PASTURE, NO SIGN OF STONE, SEARCH AREA 1900' E. OF ROAD

PLANE COORDINATE POSITION DATA

State \_\_\_\_\_ Zone \_\_\_\_\_  
X \_\_\_\_\_  
Y \_\_\_\_\_  
Estab. By O. Thinsvall  
Agency \_\_\_\_\_

Civil Eng.

Signature R. TAYLOR Title ST Division CS Headquarters SO Date 10/6/77  
7/6/87

CORNER RECORD (PERPETUATION)

MONUMENT: DESCRIBE NEW MONUMENT SET, OR WORK DONE TO PRESERVE EXISTING MONUMENT

9

ACCESSORIES : DESCRIBE NEW BT'S WITNESS OBJECTS ETC. ESTABLISHED, OR WORK DONE TO PRESERVE EXISTING EVIDENCE

10

Work Done By \_\_\_\_\_ Title \_\_\_\_\_ Date \_\_\_\_\_ State Registration No. or Agency \_\_\_\_\_

Certified Cor. Record Prepared ? Yes No Filed At: \_\_\_\_\_ Date \_\_\_\_\_

11

REMARKS

12

Index File No. T. R. M. Tract or Surv. No.

Cor. **N-25** 13

USDA-FOREST SERVICE D-7100-52(2/82)

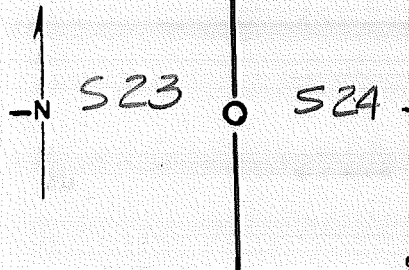
Index \_\_\_\_\_  
 File No. \_\_\_\_\_

**CORNER RECORD (SEARCH)** Contract or  
 (Ref. FSM 7151.4) Survey No. \_\_\_\_\_

T 25 S. R. 12 E. R.D. FT. ROCK County LAKE WV4 Cor. of  
 Merid. Willamette N.F. Deschutes State Oregon Section 24

Cor. No. P-21

CORNER DIAGRAM per legend



DESCRIBE CORNER MONUMENT FOUND S.F.N.F.

---



---



---

DESCRIBE BEARING TREES OR OTHER OFFICIAL ACCESSORIES FOUND  
S.F.N.F. - COMPASS & PACED N. FROM SIGN  
BOARD ON RD # 930. SEARCH AREA IN  
LOGGED, BURNT AREA W/ MANY DEAD &  
DOWN AND SOME LARGE STANDING P. PINES

PHOTO IDENTIFICATION DATA

Photo No. \_\_\_\_\_  
 Filed At. \_\_\_\_\_  
 Object Ident. \_\_\_\_\_  
 Ident. By \_\_\_\_\_  
 Signature \_\_\_\_\_

DESCRIBE CORNER LOCATION RELATIVE TO NEAR-BY FEATURES, ALSO HOW TO REACH CORNER

---



---

CORNER LEGEND:

- FS or Unverified
- Contr. Other
- ◇ Searched For/Not Found
- ⊗ ⊗ Evidence Found/Accept.
- ◆ Permanent Mon. Set/Pd.

---



---

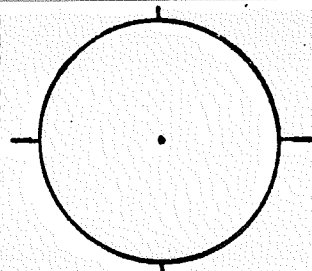


---

Searched By: R. TAYLOR Title ST Division CS Headquarters SO Date 11-17-83

CORNER RECORD (PERPETUATION)

MONUMENT STAMPED



MONUMENT. DESCRIBE NEW MONUMENT SET, OR WORK DONE TO PRESERVE EXISTING MONUMENT

ACCESSORIES DESCRIBE NEW BT'S WITNESS OBJECTS ETC. ESTABLISHED, OR WORK DONE TO PRESERVE EXISTING EVIDENCE

Work Done By \_\_\_\_\_ Title \_\_\_\_\_ Date \_\_\_\_\_ State Registration No. \_\_\_\_\_ or Agency \_\_\_\_\_

Flat or Certified Cor Record Prepared? Yes No Filed At \_\_\_\_\_ Co. Surveyor's Office Date \_\_\_\_\_

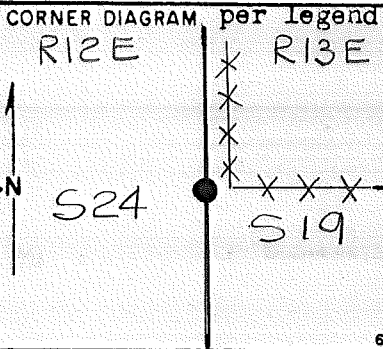
History of Surveys, G.L.O., etc. 30" PINE, N68°E, 89 lks POST  
10" PINE, WEST, 29 lks

Index File No. T.25 S., R. 12 E., W.M. Contract or Surv. No. Cor. P-21

USDA-FOREST SERVICE D-7100-52(2/82)

Index File No. \_\_\_\_\_ CORNER RECORD (SEARCH) Contract or Survey No. \_\_\_\_\_ Cor. No. P-25  
(Ref. FSM 7151.4)

T 25 S. R. 12 E. R.D. Ft. ROCK County LAKE E 1/4 Cor. of Merid. Willamette N.F. Deschutes State Oregon Section 24



DESCRIBE CORNER MONUMENT FOUND 3" BLM BRASS CAP, RSG. 2"

DESCRIBE BEARING TREES OR OTHER OFFICIAL ACCESSORIES FOUND  
46" R.PINE, CHOPPED OPEN SCRIBE VISIBLE, BT TAG, N53°W, 100IKS  
14" L.PINE, S8 1/2°W, 40IKS, "1/4 S 24 BT" (DEAD)  
10" R.PINE, S59°E, 106 1/2IKS, "1/4 S 19 BT"

PHOTO IDENTIFICATION DATA  
Photo No. \_\_\_\_\_  
Filed At. \_\_\_\_\_  
Object Ident. \_\_\_\_\_  
Ident. By \_\_\_\_\_  
*Signature*

10" DEAD, DOWN, & DECAYED R.PINE, TOP & BOTTOM BLAZE "B"

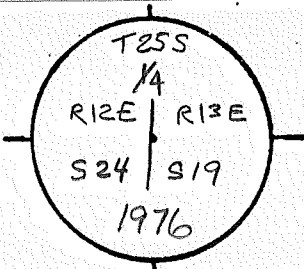
DESCRIBE CORNER LOCATION RELATIVE TO NEAR-BY FEATURES, ALSO HOW TO REACH CORNER  
3° W. OF FENCE COR., 330' N. OF Rd #3145 @  
SIGN BOARD

CORNER LEGEND:  
FS or Contr. Unverified Other  
○ ◊ Searched For/Not Found  
⊗ ⊗ Evidence Found/Accept.  
● ◆ Permanent Mon. Set/Yd.

Searched By: R.TAYLOR Title ST Division CS Headquarters SO Date 11-16-83

CORNER RECORD (PERPETUATION)

MONUMENT STAMPED



MONUMENT. DESCRIBE NEW MONUMENT SET, OR WORK DONE TO PRESERVE EXISTING MONUMENT

ACCESSORIES. DESCRIBE NEW BT'S WITNESS OBJECTS ETC. ESTABLISHED, OR WORK DONE TO PRESERVE EXISTING EVIDENCE

Work Done By \_\_\_\_\_ Title \_\_\_\_\_ Date \_\_\_\_\_ State Registration No. \_\_\_\_\_ or Agency \_\_\_\_\_

Flat or Cor Record Prepared? Yes  No  Filed At \_\_\_\_\_ Co. Surveyor's Office Date \_\_\_\_\_

History of Surveys, G.L.O., etc. 34" PINE, N53°W, 1001KS. POST  
6" PINE, S45°E, 1291KS

Index File No. T. 25S., R. 12 E., W.M. Contract or Surv. No \_\_\_\_\_ Cor. P-25



Index  
File No. R-17

**CORNER RECORD (SEARCH)**

(Ref. FSM 7151.4)

Tract or  
Survey No. \_\_\_\_\_ Cor.  
No. R-17

T 25 S R. 12 E

R.D. Fort Rock County Lake

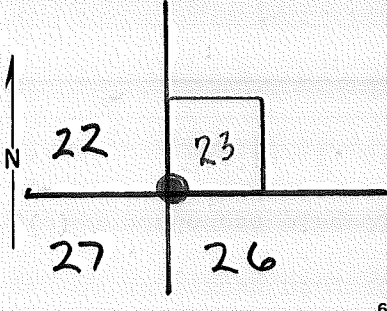
NEW COR

Merid. Willamette

N.F. Deschutes State Oregon

S. 26

**CORNER DIAGRAM**



**DESCRIBE CORNER MONUMENT FOUND**

None

**DESCRIBE BEARING TREES OR OTHER OFFICIAL ACCESSORIES FOUND**

At the corner I found BT's 1 and 4 to be stumps. BT's 2 and 3 are standing, green trees. Laying off the correct distance I find a pile of rocks set into the ground which I accept as the true corner

**PHOTO IDENTIFICATION DATA**

Photo No. \_\_\_\_\_  
Filed At. \_\_\_\_\_  
Object Ident. \_\_\_\_\_  
Ident. By \_\_\_\_\_  
*Signature*

**DESCRIBE CORNER LOCATION RELATIVE TO NEAR-BY FEATURES, ALSO HOW TO REACH CORNER**

**PLANE COORDINATE POSITION DATA**

State \_\_\_\_\_ Zone \_\_\_\_\_  
X \_\_\_\_\_  
Y \_\_\_\_\_  
Estab. By \_\_\_\_\_  
*Agency*

Signature  
**H.M. Van Horn**

Title  
**Eng. Tech.**

Division  
**SO**

Headquarters

Date  
**2/6/73**

7100-52 (3/68)

CORNER RECORD (PERPETUATION)

MONUMENT: DESCRIBE NEW MONUMENT SET, OR WORK DONE TO PRESERVE EXISTING MONUMENT

I monumented the corner with a 2-inch galvanized iron pipe w/-brass cap, 30 inches long, set 24 inches into the ground, and marked it:

T25S R12E

~~S22~~ | ~~S23~~  
~~S27~~ | ~~S26~~

Reg. No. 622

ACCESSORIES : DESCRIBE NEW BT'S WITNESS OBJECTS ETC. ESTABLISHED, OR WORK DONE TO PRESERVE EXISTING EVIDENCE

Since there were no other trees immediately available I only scribed one tree to replace the two BT's which are now stumps.

(2) A ponderosa pine 16 inches diameter, bears N19°E, a distance of 47.3 feet to a 60d nail driven into the base of the tree.

A ponderosa pine 16 inches diameter, scribed T25S R12E S27BT, bears S34°W a distance of 116.0 feet to a 60d nail in the base of the tree.

(3) A ponderosa pine 23 inches diameter, bears S71°E, a distance of 36.2 feet to a 60d nail driven into the base of the tree.

Work Done By William F. Steers Title R.L.S. Date 1-25-65 State Registration No. 622  
or Agency

Certified Cor. Record Prepared ? Yes  No  Filed At: Lake County Courthouse Date

REMARKS

See File: T25S R12E

12/86 - Walt Miller (PLS 2111) SET 2 NEW BTs -  
A 9" P. pine brs N57°W @ 50.8' to a 60-d nail in SW base, MKD T25S R12E S22 BT  
A 10 " " S51 1/2° E @ 60.0 " " " " SW " " T25S R12E S26 BT

Index File No. T. 25 S. R. 12 E. M. Tract or Surv. No. Cor. R-17

# LAND CORNER RECORD

(Rectangular)

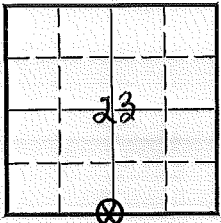
R-19 5680-2

1. T. 25S R. 12E No. R-19 Cor. 1 Mer. W State Oregon N. F. Deschutes Dist. Port Rock

2. Corner Status \_\_\_\_\_

3. Original Description \_\_\_\_\_ Vol. \_\_\_\_\_ Page \_\_\_\_\_ Where Recorded \_\_\_\_\_

4. Description of Corners:



5. Investigation Notes:

Post ~~Rotten~~  
BT sec. 23 PP 4' Dia. Bearing N 30°W. Dis. 6'  
BT Sec. 26 PP 3' Dia. Bearing S 10°E. Dis. 10'

7. Photo Identification

Photo No. \_\_\_\_\_  
Ident. By: \_\_\_\_\_

8. Plane Coordinate Position Data

State \_\_\_\_\_ Zone \_\_\_\_\_  
X \_\_\_\_\_  
Y \_\_\_\_\_  
Estab. By \_\_\_\_\_  
Field Book No. \_\_\_\_\_  
Where Filed \_\_\_\_\_

9. Evaluation

Authentic ?  
Needs Verif. \_\_\_\_\_ Monument No  
Re-estab. ✓ Survey \_\_\_\_\_  
Land Status F.S.

6. Signed M.L.C. Title \_\_\_\_\_ Date 1959

PERPETUATION RECORD

10. Monument:

11. Accessories

		Field Book _____	Page _____
12. Set By _____	Title _____	13. Recorded By _____	Volume _____
License _____	Agency _____	(Agency)	Page _____
Date _____		(Date) _____	(City) _____
		(County) _____	(State) _____

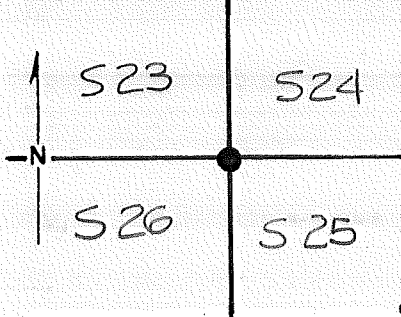
14. Remarks:

R-19

USDA-FOREST SERVICE D-7100-52(2/82)

Index File No. \_\_\_\_\_ CORNER RECORD (SEARCH) Contract or Survey No. \_\_\_\_\_ Cor. No. R-21  
(Ref. FSM 7151.4)  
T 25 S. R. 12 E. R.D. FT. ROCK County LAKE SW Cor. of  
Merid. Willamette N.F. Deschutes State Oregon Section 24

CORNER DIAGRAM per Legend



DESCRIBE CORNER MONUMENT FOUND 3" BLM B.C. PSNG. 5"  
W/ OLD POST (FAINT SCRIBING) 1° FT. SOUTH

DESCRIBE BEARING TREES OR OTHER OFFICIAL ACCESSORIES FOUND  
ORIG. NE DEAD & DOWN, HEALED BLAZE, BT TAG  
21" P. PINE N30°W, 11 1/2 KS, HEALED UPPER & LOWER BLAZE (DEAD)  
6' P. PINE, S66°E, 54 1/2 KS, "T25 S R12 E S25 BT"

PHOTO IDENTIFICATION DATA

Photo No. J. N. TENNANT  
Filed At. MENLO PARK, CA  
Object Ident. GS-VDOH  
Ident. By LINE 2 EXPOSURE  
Signature 257

6" " N11°E, 48 1/2 KS, "T25 S R12 E S24 BT"  
8" P. PINE, S66°W, 7 1/2 KS, "T25 S R12 E S26 BT"

DESCRIBE CORNER LOCATION RELATIVE TO NEAR-BY FEATURES, ALSO HOW TO REACH CORNER  
SIGN ROAD 50' N. ON RD #930

CORNER LEGEND:

- FS or Unverified
- Contr. Other
- ◊ Searched For/Not Found
- ⊗ ⊗ Evidence Found/Accept.
- ◆ Permanent Mon. Set/Fd.

\_\_\_\_\_

\_\_\_\_\_

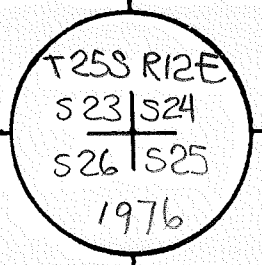
\_\_\_\_\_

\_\_\_\_\_

Searched By: RTH/20K Title ST Division CS Headquarters SO Date 11/17/83

CORNER RECORD (PERPETUATION)

MONUMENT STAMPED



MONUMENT. DESCRIBE NEW MONUMENT SET, OR WORK DONE TO PRESERVE EXISTING MONUMENT

ACCESSORIES DESCRIBE NEW BT'S WITNESS OBJECTS ETC. ESTABLISHED, OR WORK DONE TO PRESERVE EXISTING EVIDENCE

Work Done By \_\_\_\_\_ Title \_\_\_\_\_ Date \_\_\_\_\_ State Registration No. \_\_\_\_\_  
or Agency \_\_\_\_\_

Flat or Cor Record Prepared? Yes No Filed At \_\_\_\_\_ Co. Surveyor's Office Date \_\_\_\_\_

History of Surveys, G.L.O., etc. 40" PINE, S82°W, 113 lks.  
35" PINE, S55°E, 105 " POST  
24" " , N53°E, 5 lks  
20" " , N21°W, 11 lks

Index File No. T. 25S., R. 12 E., W.M. Contract or Surv. No. \_\_\_\_\_ Cor. R-21/13

US DA-FOREST SERVICE

Index

File No. 2367

CORNER RECORD (SEARCH)

(Ref. FSM 7151.4)

Tract or Survey No. \_\_\_\_\_

Cor. No. R-23

T 25 S.R. 12 E. R.D. Ft. Rock County Lake S/4 sec. 24

Merid. WMT N.F. Deschutes State Oregon

CORNER DIAGRAM



DIAGRAM

T. 25 S. R. 12 E.

1/4 S 24  
S 25

DESCRIBE CORNER MONUMENT FOUND

SP/NF

DESCRIBE BEARING TREES OR OTHER OFFICIAL ACCESSORIES FOUND

Description of corner evidence found:

No evidence of original post was found. GLO Bearing and distance don't fit. Set corner at a distance/distance intersect point.

A Ponderosa Pine windfall, 30" dia., bears N.74 1/2°E., 50 lks., with face and scribing visible.

A Ponderosa Pine, 24" dia., bears S.10 1/2°W., 16 lks., with overgrown face.

PHOTO IDENTIFICATION DATA

Photo No. \_\_\_\_\_

Filed At. \_\_\_\_\_

Object Ident. \_\_\_\_\_

Ident. By \_\_\_\_\_

Signature

PLANE COORDINATE POSITION DATA

State \_\_\_\_\_ Zone \_\_\_\_\_

X \_\_\_\_\_

Y \_\_\_\_\_

Established By \_\_\_\_\_

Agency

Signature

William B. Han

Title

PL

Division

CS

Headquarters

SO

Date

1/92

FS-7100-52 (3/68)



## CORNER RECORD (PERPETUATION)

**MONUMENT: DESCRIBE NEW MONUMENT SET, OR WORK DONE TO PRESERVE EXISTING MONUMENT**

Description of monument and accessories I established to perpetuate the location of this corner. At the point established from original BT's, set a 2 1/2" dia. X 30" long galvanized steel pipe surmounted by a 2 1/2" dia. brass cap, rising 2" above ground.

A penny at base of cap. From which:

A Ponderosa Pine, 5" dia., bears N.29 1/2°E., 59.8 ft. dist., marked X B.T.

A Ponderosa Pine, 8" dia., bears S.71 1/2°E., 51.7 ft. dist., marked 1/4 S 25 B.T.

A Ponderosa Pine, 24" dia., bears S.10 1/2°W., 11.1 ft. dist. Original BT. Not Re-marked.

A Ponderosa Pine, 20" dia., bears N.22 1/2°W., 44.0 ft. dist., marked 1/4 S 24 B.T.

MONUMENT STAMPED

T 25 S

ACCESSOR

R

E

1/4 S 24

S 25

PLS 2396

1991

EXISTING EVIDENCE

Distances measured to nail at side center of the tree. Brass washer marked LS 2396 nailed between the B and T in the scribing.

Bearings measured with a staff compass set at 19 1/2°E East, Magnetic Deviation.

10

Work Done By William B. Ham Title PLS Date 1/92 State Registration No. 2396  
or Agency

Certified Cor. Record Prepared?  Yes No Filed At: Lake Co. Date 1/15/92

11

**REMARKS**

**History of original corner establishment:**

Survey of 1880 by Thompson, Meldrum & Moore.

Set pine post for 1/4 Sec. Corner, from which a:

Pine, 30 in. diam. bears N75°E, 50 lks. dist.

Pine, 22 " " " S 1°E, 16 lks. "

12

Index File No. T. R. M. Tract or Surv. No. Cor.

2367

25

12

GPO: 1986 O - 439-095

Cor. R-23

13

Index File No. \_\_\_\_\_ CORNER RECORD (SEARCH) Contract or Survey No. \_\_\_\_\_  
 (Ref. FSM 7151.4)  
 T 25 S. R. 12 E. R.D. FT. ROCK County LAKE SE Cor. of  
 Merid. Willamette N.F. Deschutes State Oregon Section 24

CORNER DIAGRAM per legend



DESCRIBE CORNER MONUMENT FOUND

3" BLM BRASS CAP

RSNG. 4"

DESCRIBE BEARING TREES OR OTHER OFFICIAL ACCESSORIES FOUND

NW ORIG. DEAD, DOWN, DECAYING P.PINE, SCRIBING VISIBLE  
 31" P.PINE STUMP - 5" HIGH, BT TOP BLAZE WEATHERED, SW  
 27" P.PINE, S50°E, 129Ks, CHOPPED OPEN, SCRIBING VISIBLE  
 N.E. ORIG UPTURNED STUMP

PHOTO IDENTIFICATION DATA

Photo No. \_\_\_\_\_  
 Filed At. \_\_\_\_\_  
 Object Ident. \_\_\_\_\_  
 Ident. By \_\_\_\_\_  
 Signature \_\_\_\_\_

DESCRIBE CORNER LOCATION RELATIVE TO NEAR-BY FEATURES, ALSO HOW TO REACH CORNER

400' S. OF DRAW, SIGN BOARD 660' E. OF B.C.

CORNER LEGEND:

- FS or Unverified
- Contr. Other
- ◇ Searched For/Not Found
- ⊗ ⊗ Evidence Found/Accept.
- ◆ Permanent Mon. Set/Yd.

Searched By: R. TAYLOR

Title ST

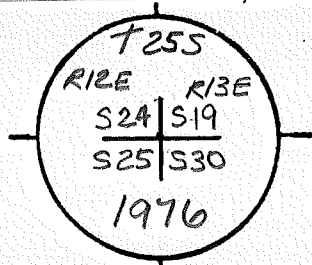
Division CS

Headquarters SO

Date 11-16-83

CORNER RECORD (PERPETUATION)

MONUMENT STAMPED



MONUMENT: DESCRIBE NEW MONUMENT SET, OR WORK DONE TO PRESERVE EXISTING MONUMENT

ACCESSORIES: DESCRIBE ~~NEW~~ BT'S WITNESS OBJECTS ETC. ESTABLISHED, OR WORK DONE TO PRESERVE EXISTING EVIDENCE

7" P.PINE, N36 1/2° W, 175 lks. "T25S R12E S24 BT"  
 10" P.PINE, S58° W, 49 lks "T25S R12E S25 BT"  
 11" P.PINE, N39° E, 148 lks "T25S R13E S19 BT"

Work Done By \_\_\_\_\_ Title \_\_\_\_\_ Date \_\_\_\_\_ State Registration No. \_\_\_\_\_  
 or Agency \_\_\_\_\_

Flat of \_\_\_\_\_  
 Certified for Record Prepared? Yes  No  Filed At \_\_\_\_\_ Co. Surveyor's Office Date \_\_\_\_\_

History of Surveys, G.L.O., etc.

---



---



---



---

Index File No. T. 25 S., R. 12 E., W.M. Contract or Surv. No. Cor. R-25

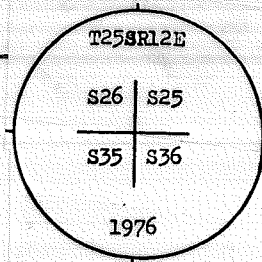
9  
10  
11  
12  
13





**CORNER RECORD (PERPETUATION)**

**MONUMENT: DESCRIBE NEW MONUMENT SET, OR WORK DONE TO PRESERVE EXISTING MONUMENT**



**ACCESSORIES: DESCRIBE NEW BT'S WITNESS OBJECTS ETC. ESTABLISHED, OR WORK DONE TO PRESERVE EXISTING EVIDENCE**

I added 2 Bearing trees as follows:

A 10" Ponderosa Pine bears S49½°E at 102.9 ft., to a 60-Penny spike in the NNE, base, marked T25SR12ES36BT.

A 6" Ponderosa Pine bears N75½°E at 98.8 ft., to a 60-Penny spike in the NW base, marked T25SR12ES25BT.

Work Done By W. Miller Title PLS Date 12/86 State Registration No. 2111  
or Agency

Certified Cor. Record Prepared?  Yes No Filed At: DBS Date 12/29/86

Original Survey By H. Meldrum REMARKS Date 02/16/1881

**ORIGINAL DESCRIPTION:**

Set pine post 4 ft. long 3 in. dia. for cor. to secs. 25.26.

35 & 36 from which a

pine 24 in. dia. bears N68°E 50 lks. dist.

" 36 " " " N70°W 80 " "

" 18 " " " S32°W 55 " "

" 5 " " " S33°E 33 " "

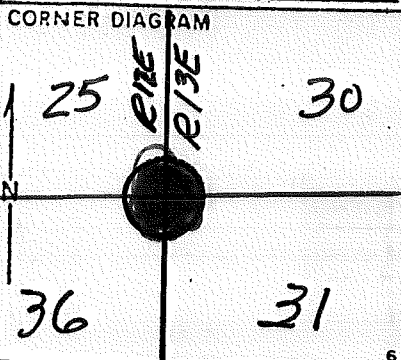
Index File No. 1976 -- The B.L.M. remonumented the corner from evidence per their field notes. Cor. 13



Index File No. \_\_\_\_\_  
T 25 S R. 12 E  
Merid. WMT

CORNER RECORD (SEARCH)  
(Ref. FSM 7151.4)  
Tract or Survey No. \_\_\_\_\_  
R.D. FORT ROCK County LAKE  
N.F. DES. State OR.

Cor. No. V-25



DESCRIBE CORNER MONUMENT FOUND

SCRIBED STAKE  
BLM BC -1976

DESCRIBE BEARING TREES OR OTHER OFFICIAL ACCESSORIES FOUND

2 BT's  
11" P.P. S25E 40'  
17" P.P. S40W 40'

PHOTO IDENTIFICATION DATA

Photo No. \_\_\_\_\_  
Filed At. \_\_\_\_\_  
Object Ident. \_\_\_\_\_  
Ident. By \_\_\_\_\_  
Signature \_\_\_\_\_

DESCRIBE CORNER LOCATION RELATIVE TO NEAR-BY FEATURES, ALSO HOW TO REACH CORNER

PLANE COORDINATE POSITION DATA

State \_\_\_\_\_ Zone \_\_\_\_\_  
X \_\_\_\_\_  
Y \_\_\_\_\_  
Estab. By \_\_\_\_\_  
Agency \_\_\_\_\_

Signature  
DM MILLER

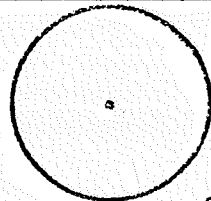
Title \_\_\_\_\_ Division \_\_\_\_\_ Headquarters \_\_\_\_\_ Date 1963



CORNER RECORD (PERPETUATION)

MONUMENT  
STAMPED:

MONUMENT: DESCRIBE NEW MONUMENT SET, OR WORK DONE TO PRESERVE EXISTING MONUMENT



9

ACCESSORIES : DESCRIBE NEW BT's WITNESS OBJECTS ETC. ESTABLISHED, OR WORK DONE TO PRESERVE EXISTING EVIDENCE

10

Work Done By \_\_\_\_\_ Title \_\_\_\_\_ Date \_\_\_\_\_ State Registration No. or Agency \_\_\_\_\_

Certified Cor. Record Prepared ? Yes No Filed At: \_\_\_\_\_ Date \_\_\_\_\_

11

REMARKS

12

Index File No. T. R. M. Tract or Surv. No. Cor. 13

USDA-FOREST SERVICE

Index

File No. \_\_\_\_\_

CORNER RECORD (SEARCH)

(Ref. FSM 7151.4)

Tract or

Survey No. \_\_\_\_\_

Cor.

No. **X-25**

T 25 S. R. 12 E.

R.D. Ft. Rock

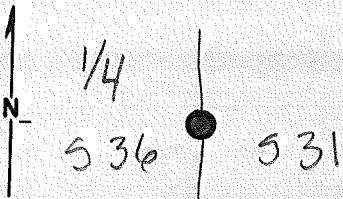
County LAKE

Merid. WILLAMETTE

N.F. DESCHUTES

State OREGON

CORNER DIAGRAM



DESCRIBE CORNER MONUMENT FOUND

Brass Cap

See T25S R13E X:01

DESCRIBE BEARING TREES OR OTHER OFFICIAL ACCESSORIES FOUND

PHOTO IDENTIFICATION DATA

Photo No. \_\_\_\_\_

Filed At. \_\_\_\_\_

Object Ident. \_\_\_\_\_

Ident. By \_\_\_\_\_

*Signature*

PLANE COORDINATE POSITION DATA

State \_\_\_\_\_ Zone \_\_\_\_\_

X \_\_\_\_\_

Y \_\_\_\_\_

Estab. By \_\_\_\_\_

*Agency*

*Signature*

Title

Division

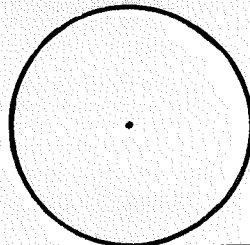
Headquarters

Date

D-7100-52 (10/78)

CORNER RECORD (PERPETUATION)

MONUMENT: DESCRIBE NEW MONUMENT SET, OR WORK DONE TO PRESERVE EXISTING MONUMENT



MONUMENT  
STAMPED

ACCESSORIES: DESCRIBE NEW BT'S WITNESS OBJECTS ETC. ESTABLISHED, OR WORK DONE TO PRESERVE EXISTING EVIDENCE

10

Work Done By \_\_\_\_\_ Title \_\_\_\_\_ Date \_\_\_\_\_ State Registration No. or Agency \_\_\_\_\_

Certified Cor. Record Prepared? Yes No Filed At: \_\_\_\_\_ Date \_\_\_\_\_

11

REMARKS

12

Index File No. T. S., R. E., W.M. Tract or Surv. No. Cor. X-25<sup>13</sup>

USDA-FOREST SERVICE

Index

File No. \_\_\_\_\_

CORNER RECORD (SEARCH)

(Ref. FSM 7151.4)

Tract or

Survey No. \_\_\_\_\_

Cor.

No. **Y-25**

T 25 S. R. 12 E.

R.D. Ft. Rock

County LAKE

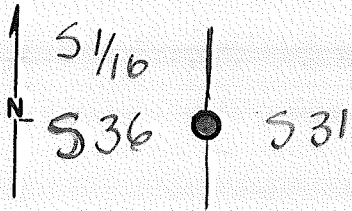
Merid. WILLAMETTE

N.F. DESCHUTES

State OREGON

CORNER DIAGRAM

DESCRIBE CORNER MONUMENT FOUND



Brass Cap.

See Y-01 : T25 S R12 E

DESCRIBE BEARING TREES OR OTHER OFFICIAL ACCESSORIES FOUND

PHOTO IDENTIFICATION DATA

Photo No. \_\_\_\_\_

Filed At. \_\_\_\_\_

Object Ident. \_\_\_\_\_

Ident. By \_\_\_\_\_

Signature

PLANE COORDINATE POSITION DATA

State \_\_\_\_\_ Zone \_\_\_\_\_

X \_\_\_\_\_

Y \_\_\_\_\_

Estab. By \_\_\_\_\_

Agency

DESCRIBE CORNER LOCATION RELATIVE TO NEAR-BY FEATURES, ALSO HOW TO REACH CORNER

Signature

Title

Division

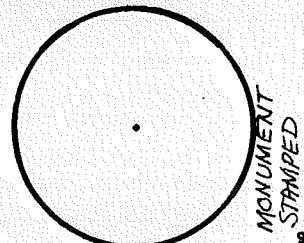
Headquarters

Date

D-7100-52 (10/70)

CORNER RECORD (PERPETUATION)

MONUMENT: DESCRIBE NEW MONUMENT SET, OR WORK DONE TO PRESERVE EXISTING MONUMENT



MONUMENT  
STAMPED

ACCESSORIES DESCRIBE NEW BT'S WITNESS OBJECTS ETC. ESTABLISHED, OR WORK DONE TO PRESERVE EXISTING EVIDENCE

10

Work Done By \_\_\_\_\_ Title \_\_\_\_\_ Date \_\_\_\_\_ State Registration No. or Agency \_\_\_\_\_

Certified Cor. Record Prepared? Yes No Filed At: \_\_\_\_\_ Date \_\_\_\_\_

11

REMARKS

Index File No. T. S., R. E., W. M. Tract or Surv. No. Cor. **Y-25**

12

USDA-FOREST SERVICE

Index  
File No. \_\_\_\_\_

CORNER RECORD (SEARCH)

(Ref. FSM 7.151.4)

Tract or  
Survey No. \_\_\_\_\_

Cor.  
No. **2-25**

T. 25 S. R. 12 E.

R.D. Ft. Rock County LAKE

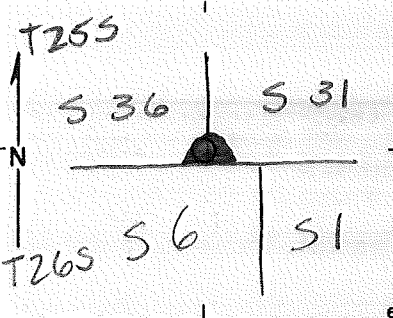
COR. of SEC.

Merid. WILLAMETTE

N.F. DESCHUTES State OREGON

COR. of SEC.

CORNER DIAGRAM PER LEGEND



DESCRIBE CORNER MONUMENT FOUND

DESCRIBE BEARING TREES OR OTHER OFFICIAL ACCESSORIES FOUND

PHOTO IDENTIFICATION DATA

Photo No. \_\_\_\_\_

Filed At. \_\_\_\_\_

Object Ident. \_\_\_\_\_

Ident. By \_\_\_\_\_

*Signature*

DESCRIBE CORNER LOCATION RELATIVE TO NEAR-BY FEATURES, ALSO HOW TO REACH CORNER

Corner Legend:

Searched for/Not Found

Evidence Found/Accept.

Permanent Monument

Signature \_\_\_\_\_

Title \_\_\_\_\_

Division \_\_\_\_\_

Headquarters \_\_\_\_\_

Date \_\_\_\_\_

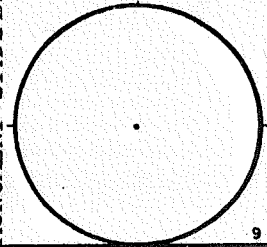
D-7100-52 (3/79)

5

CORNER RECORD (PERPETUATION)

MONUMENT. DESCRIBE NEW MONUMENT SET, OR WORK DONE TO PRESERVE EXISTING MONUMENT

MONUMENT SET/FILED



9

ACCESSORIES DESCRIBE NEW B<sup>Y</sup>'S WITNESS OBJECTS ETC. ESTABLISHED, OR WORK DONE TO PRESERVE EXISTING EVIDENCE

10

Work Done By \_\_\_\_\_ Title \_\_\_\_\_ Date \_\_\_\_\_ State Registration No. or Agency \_\_\_\_\_  
**PLAT PREPARED OR**  
Certified Cor Record Prepared? Yes No Filed At: **Co. SURVEYOR'S OFFICE** Date \_\_\_\_\_

11

REMARKS

12

Index File No. T. S., R. E., W. M. Tract or Surv. No. Cor. **2-25**